

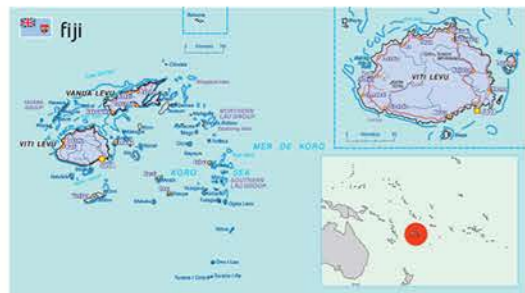
# Learning about climate change the Pacific way *A visual guide*



# Tuvalu



Source: Ministry of Information, Fiji



© Copyright Secretariat of the Pacific Community (SPC) and Deutsche Gesellschaft für Internationale Zusammenarbeit (GIZ) GmbH, 2014

All rights reserved. Requests to reproduce this material for educational, scientific or research purposes should be sent to [spc@spc.int](mailto:spc@spc.int)

Secretariat of the Pacific Community  
BP D5, 98848 Noumea Cedex, New Caledonia  
Tel. +687 26 20 00, [www.spc.int](http://www.spc.int)

SPC/GIZ Coping with Climate Change in the Pacific Island Region  
Deutsche Gesellschaft für Internationale Zusammenarbeit (GIZ) GmbH  
P.O. Box 14041, Suva, Fiji,  
Tel. +679 3305 983

Printed by Ultimo Group, Auckland, New Zealand, 2014

Secretariat of the Pacific Community Cataloguing-in-publication data  
Learning about climate change the Pacific way: a visual guide - Fiji  
Climatic changes — Fiji.  
Environment — Management — Fiji.  
Climatic changes — Management — Fiji.

I. Title II. Deutsche Gesellschaft für Internationale Zusammenarbeit  
III. Secretariat of the Pacific Community

577.22 AACR2  
ISBN: 978-982-00-0693-5

Compiled by Secretariat of the Pacific Community (SPC) and Deutsche Gesellschaft für Internationale Zusammenarbeit (GIZ) Coping with Climate Change in the Pacific Island Region (CCCPIR) program

Designers: Saula Baleikaba, Jipé Le-Bars (SPC), Duane Leewai, Charles Pierce, Hanna Sabass (SPC/GIZ CCCPIR), Apenisa Tamani (SPC/GIZ CCCPIR) and Carol Young (University of Auckland)

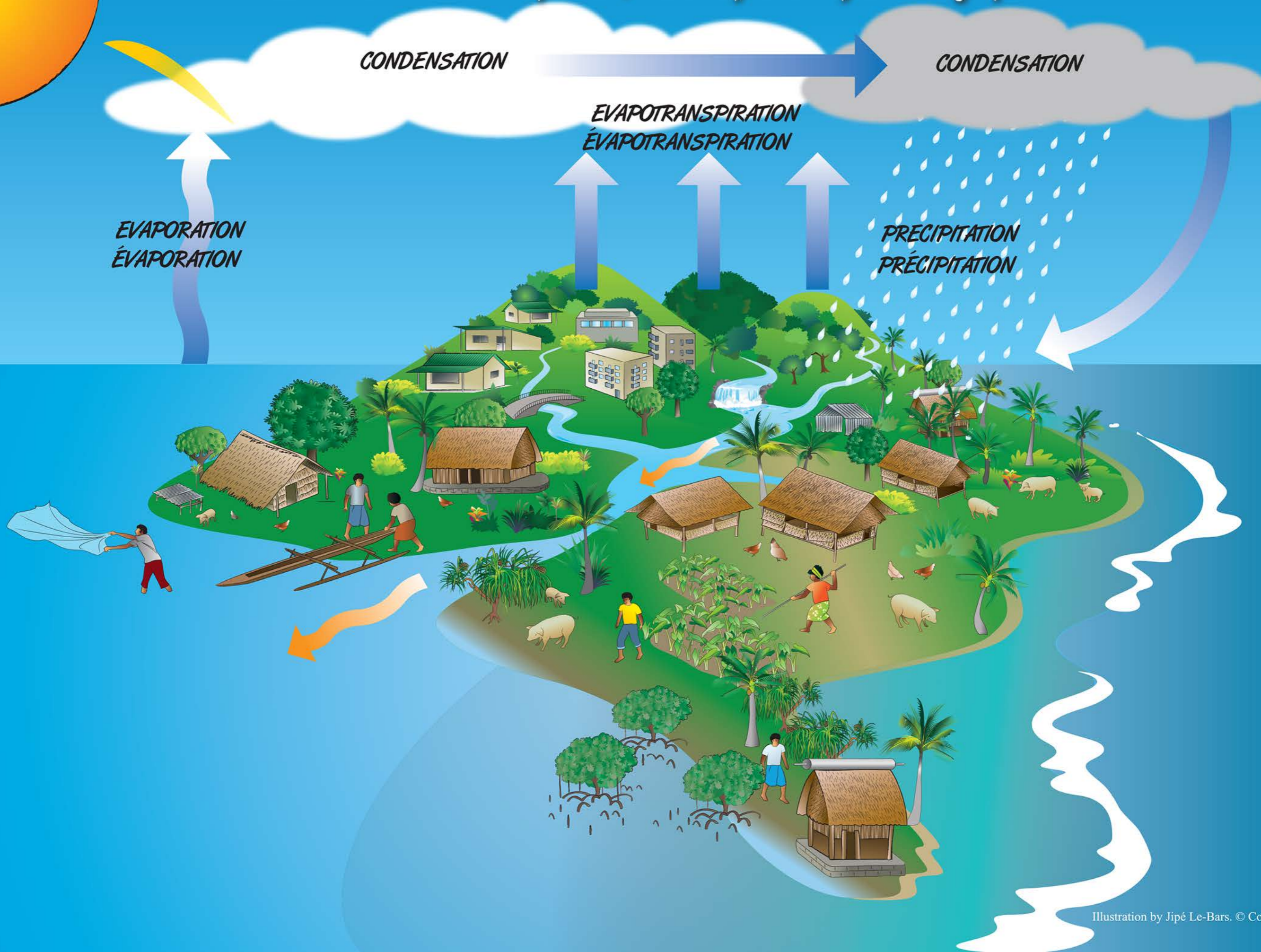
Art work by Jipé Le-Bars (SPC) & Duane Leewai

This publication was produced with funding from the Pacific-Australia Climate Change Science and Adaptation Planning (PACCSAP) program of the Australian Government; the SPC/GIZ Coping with Climate Change in the Pacific Island Region program (CCCPIR) on behalf of the German Federal Ministry for Economic Cooperation and Development (BMZ); and the SPC/USAID Vegetation and Land Cover Mapping and Improving Food Security for Building Resilience to a Changing Climate in Pacific Island Communities program.

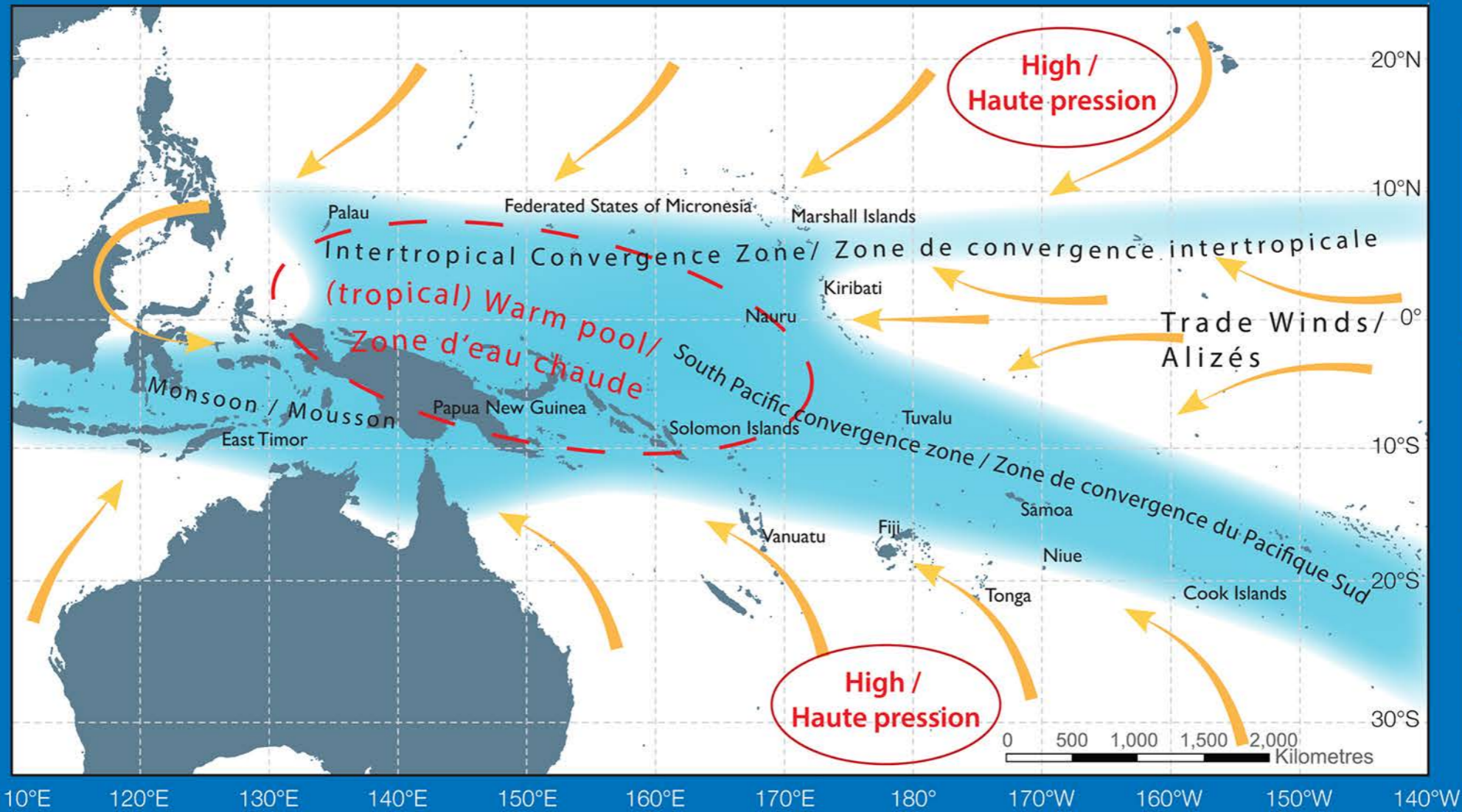
# I. Pasifika



## 2. The Water Cycle / Le cycle hydrologique



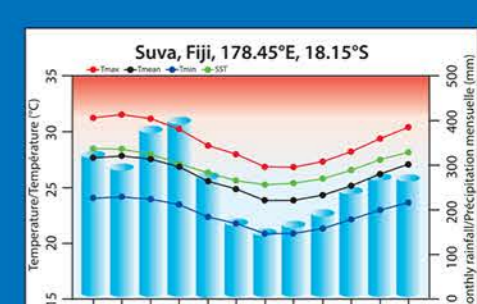
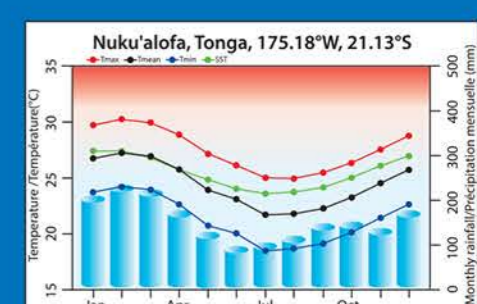
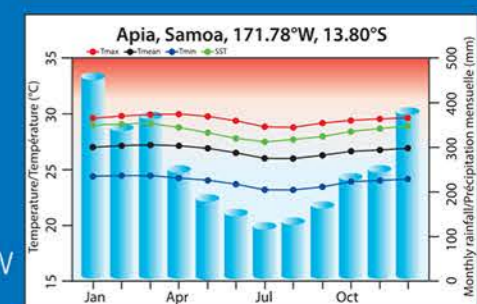
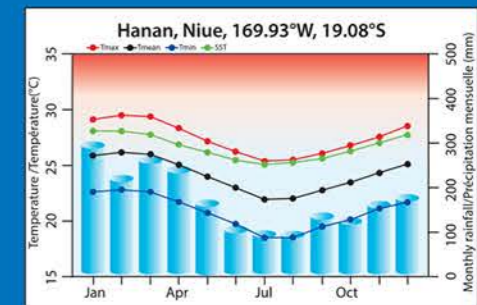
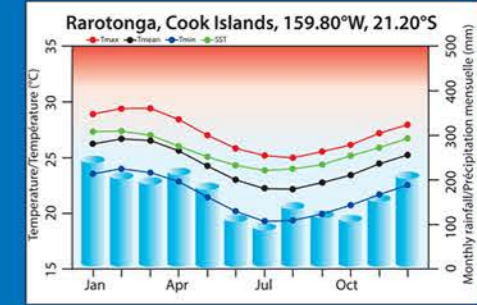
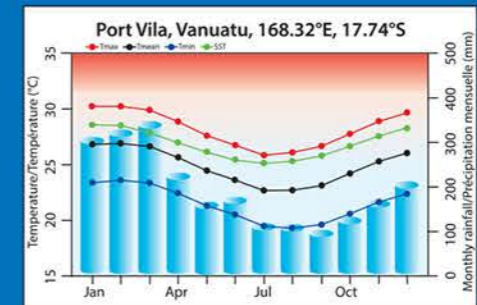
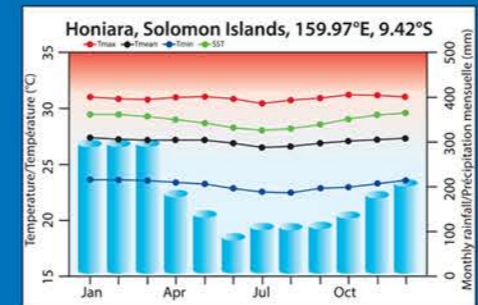
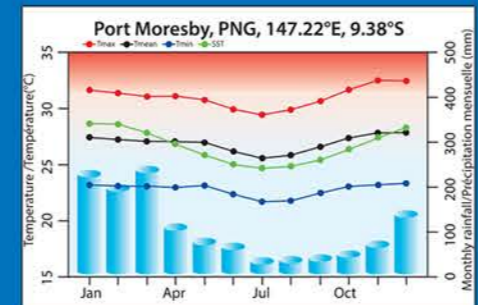
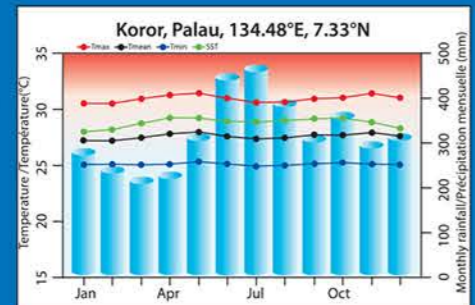
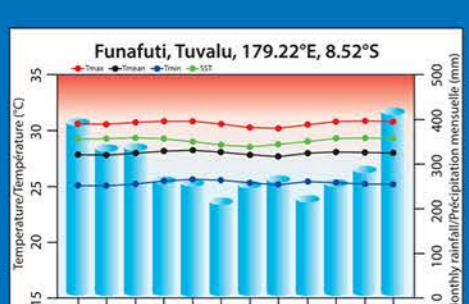
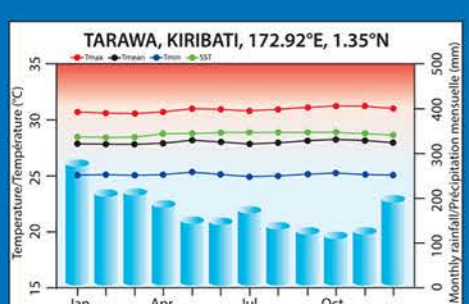
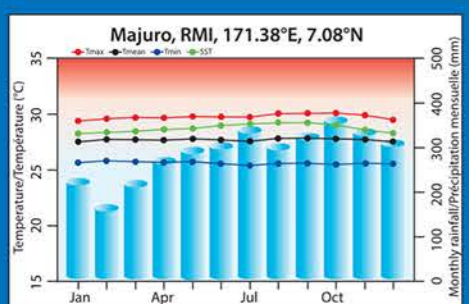
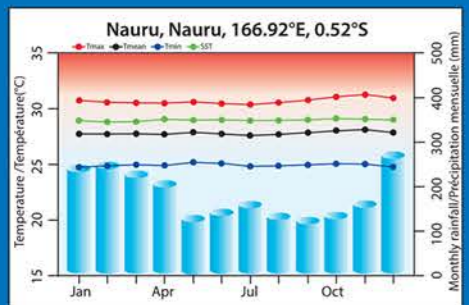
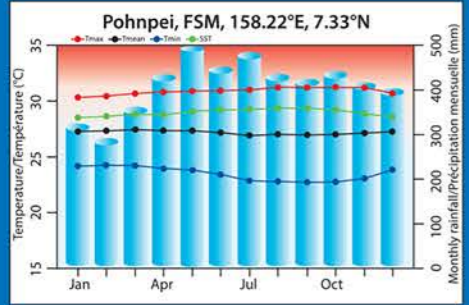
# 3. Climate in the Pacific - Le climat dans la région océanienne



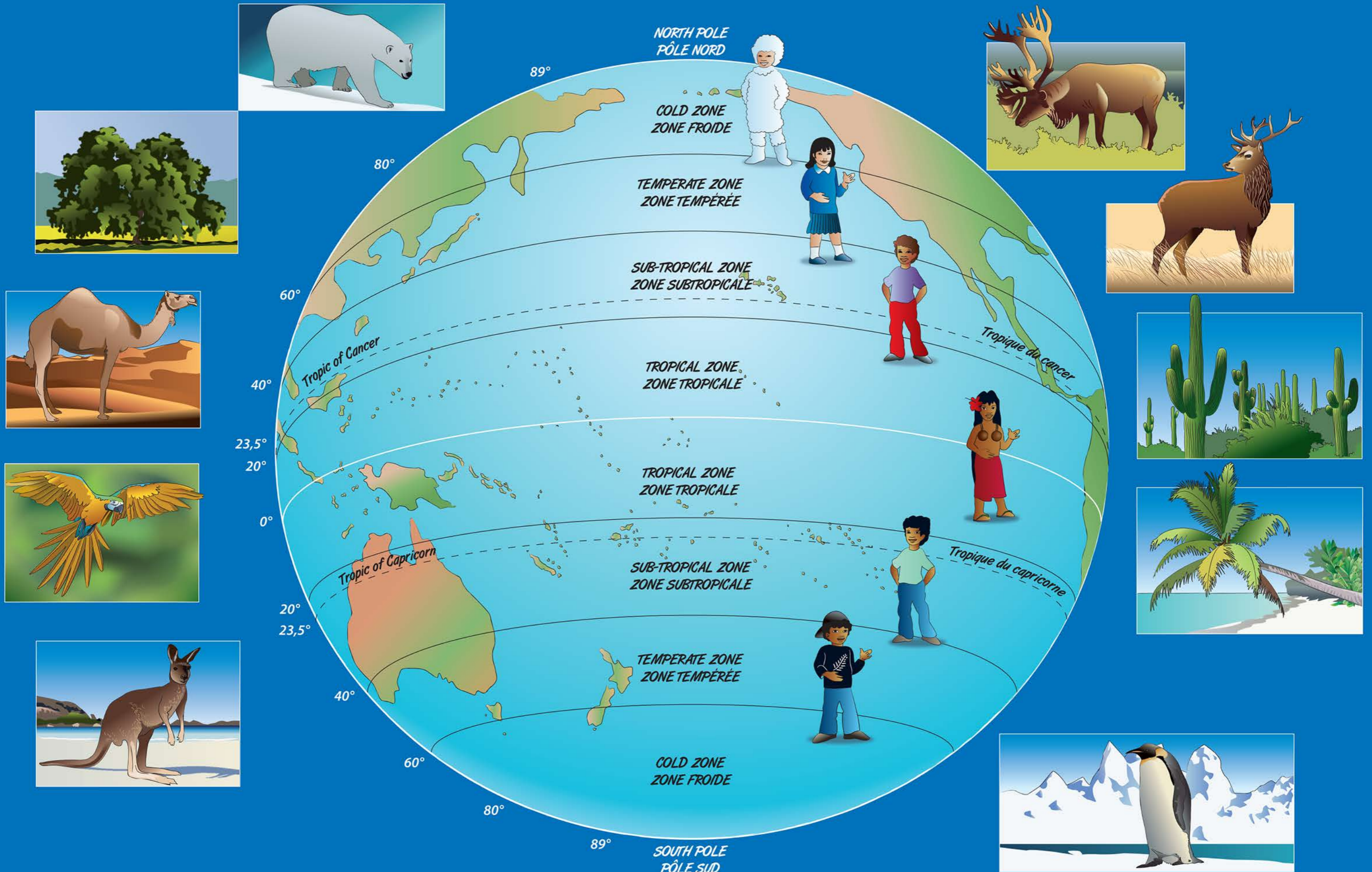
ABM-CSIRO 2011, Vol 1: 37, 42. BMA-CSIRO 2011, Vol 1: 37, 42

Monthly average maximum air temperature (red), mean air temperature (black), minimum air temperature (blue), sea-surface temperature (green) and average monthly rainfall (blue bars) at key locations in each of the Partner Countries. Station data over 1961–1990 were used.

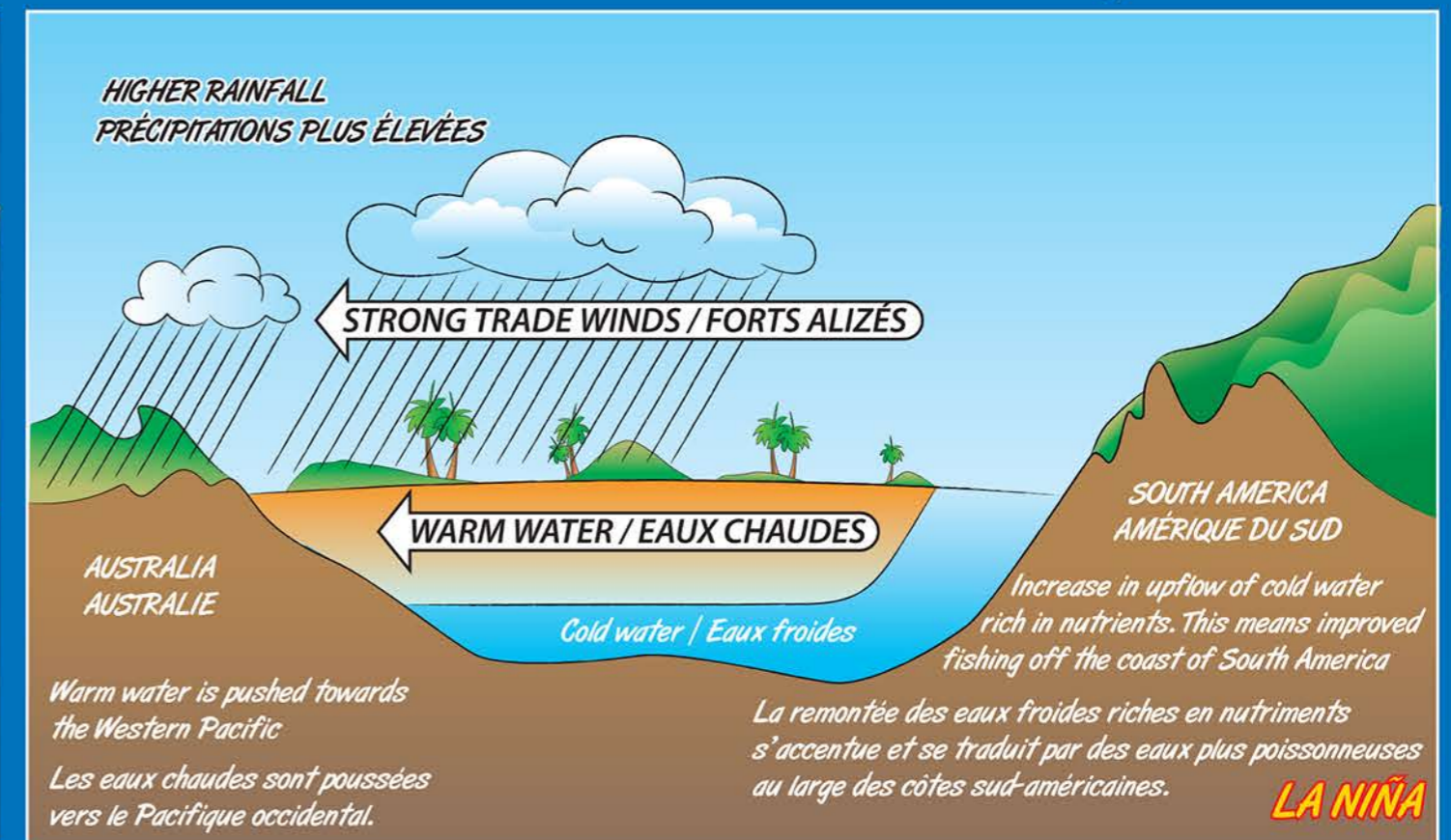
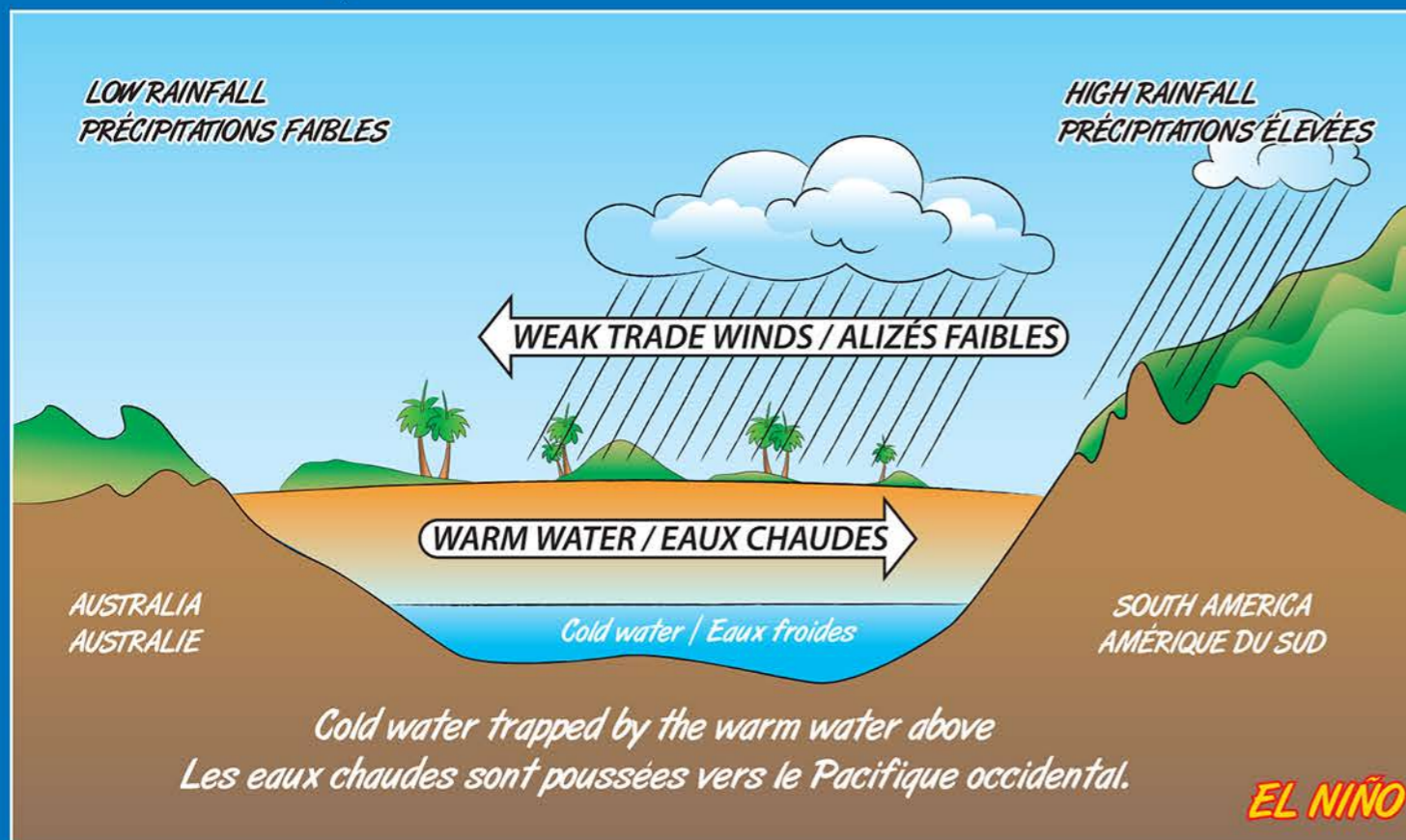
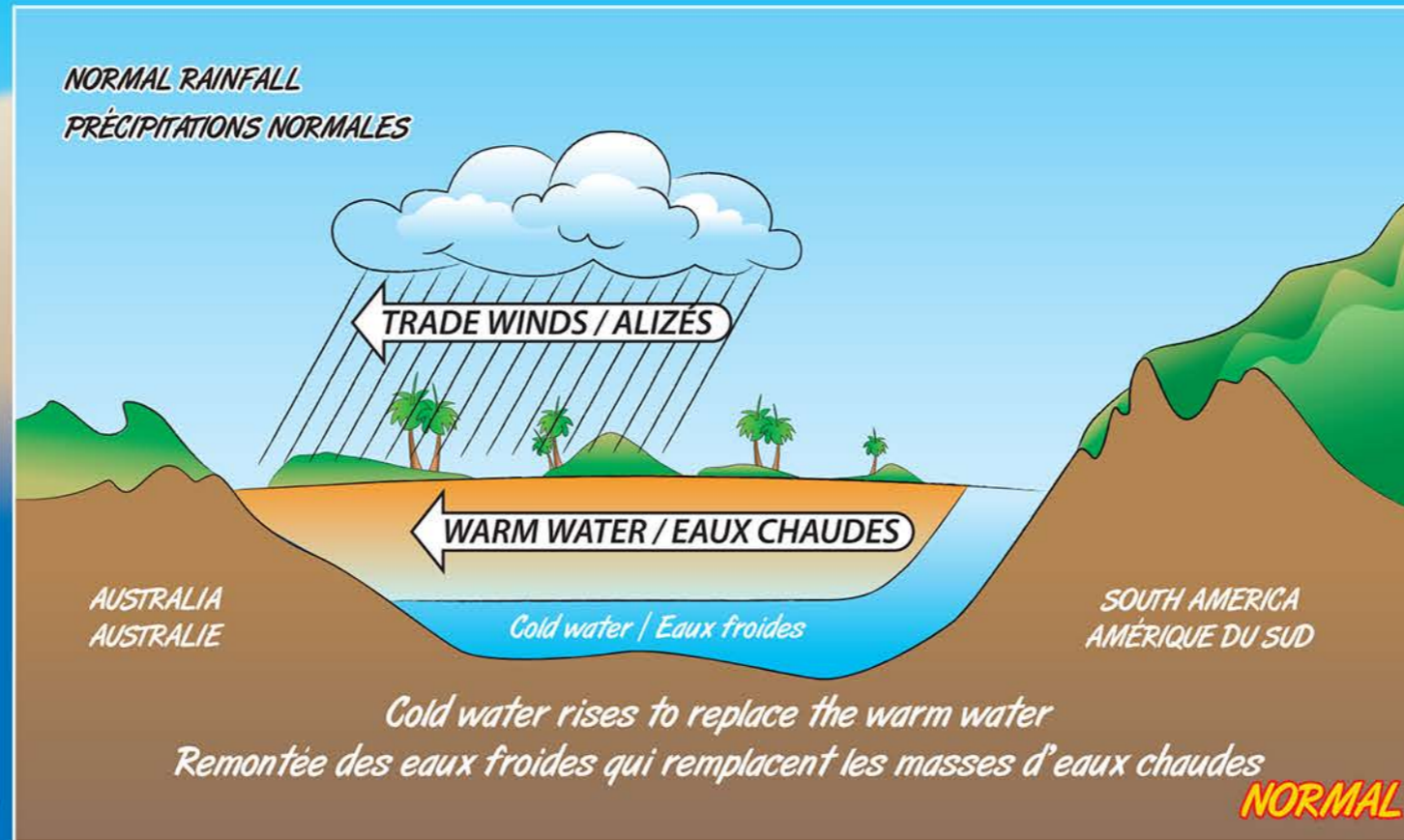
Température moyenne maximale mensuelle de l'air (en rouge), température moyenne de l'air (en noir), température minimale de l'air (en bleu), température de la mer en surface (en vert) et précipitations moyennes mensuelles (barres bleues) dans des zones clés situées dans chacun des pays partenaires. On a utilisé les données des stations de 1961 à 1990.



# 4. Global climate - Le climat mondial



# 5. El Niño Southern Oscillation (ENSO) and climate variability / Le phénomène d'oscillation australe El Niño (OAEN) et la variabilité climatique



# 6. Causes of Climate Change / Les causes du changement climatique



# 7. Interrelationships / Les liens d'interdépendance





# 8. The Changing Climate of Tuvalu



Tuvalu National Disaster Committee

Flooding, Cyclone Pam, Nui



Tuvalu National Disaster Committee

Flooding, Cyclone Pam, Nui



Photo: Carol young

cyclone Pam, Nanumaga



Drought, 2011



Tuvalu National Disaster Committee

Cyclone Pam, Nanumaga



Photo: Carol young

Cyclone Pam, Nanumaga



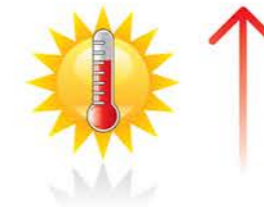
Drought, 2011

## Changing Climate:

## Future Climate:

Average annual temperature for Funafuti

Average annual rainfall for Funafuti



Temperature increase and more very hot days



Increase in wet season rainfall



More extreme rainfall days



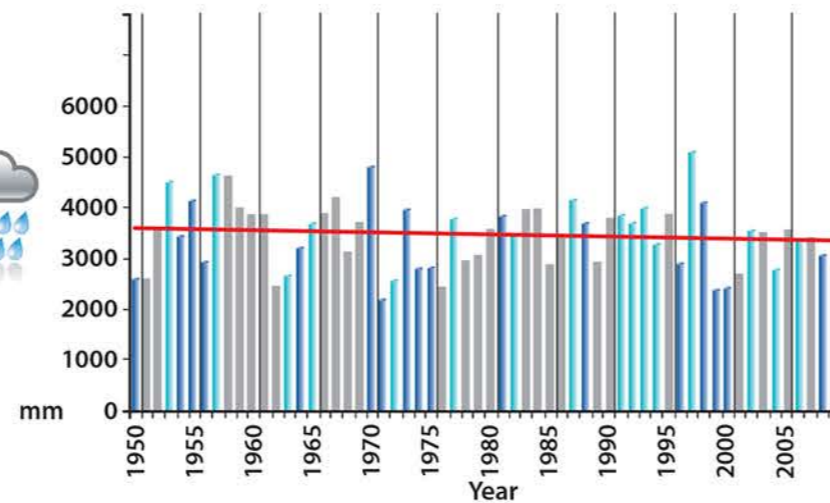
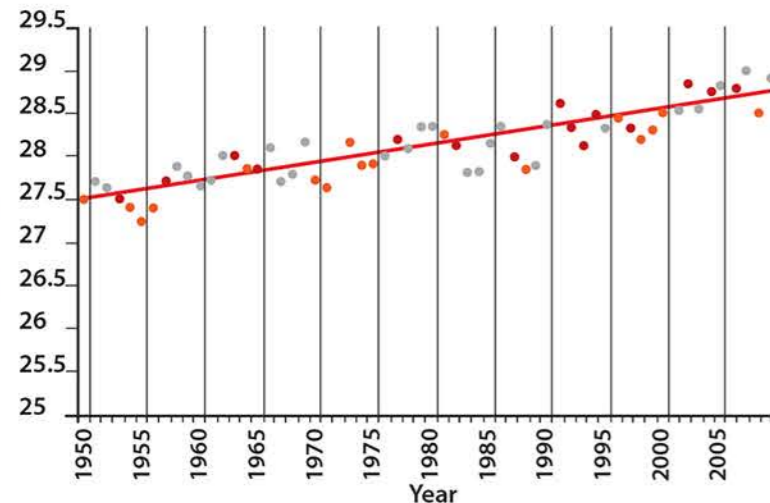
Sea-level rise



Increase in Ocean Acidification



Cyclone less frequent but more intense



• El Niño • La Niña • Normal

■ El Niño ■ La Niña ■ Normal

Source: ABM & CSIRO 2011

9. Pasifika after a cyclone or severe storm /  
Pasifika après le passage d'un cyclone ou une forte tempête



# 10. Pasifika during a drought - Pasifika après un épisode de sécheresse



# 11. Mitigation and adaptation activities - Mesures d'atténuation et d'adaptation

Mitigation - Atténuation

Mitigation + Adaptation - Atténuation + Adaptation

Adaptation - Adaptation



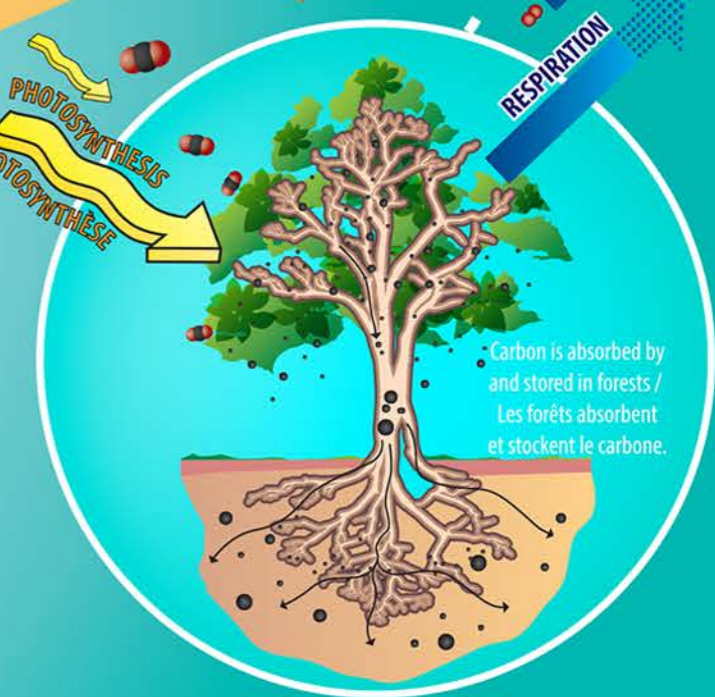
# 12. Gardening and livestock / Le jardinage et l'élevage



# 13. Forestry and agro-forestry / La foresterie et l'agroforesterie



-  CO<sub>2</sub> → Carbon dioxide / Dioxyde de carbone
-  O<sub>2</sub> → Oxygen / Oxygène
-  C → Carbon / Carbone



# 14. Fishing - La pêche







16. Pasifika with adaptations in place / Pasifika après la mise en œuvre des mesures d'adaptation

