

Learning about climate change the Pacific way

Étudier le changement climatique dans le contexte océanien

A visual guide

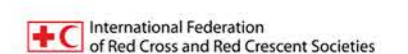
Guide illustré



NATIONAL ADVISORY BOARD
on Climate Change and Disaster Risk Reduction
GOVERNMENT OF VANUATU



Vanuatu



© Copyright Secretariat of the Pacific Community (SPC) and Deutsche Gesellschaft für Internationale Zusammenarbeit (GIZ) GmbH, 2014

All rights reserved. Requests to reproduce this material for educational, scientific or research purposes should be sent to spc@spc.int

Secretariat of the Pacific Community
BP DS, 98848 Noumea Cedex, New Caledonia
Tel. +687 26 20 00, www.spc.int

SPC/GIZ Coping with Climate Change in the Pacific Island Region
Deutsche Gesellschaft für Internationale Zusammenarbeit (GIZ) GmbH
P.O. Box 14041, Suva, Fiji
Tel. +679 3305 983

Printed by Ultimo Group, Auckland, New Zealand, 2014

Secretariat of the Pacific Community Cataloguing-in-publication data
Learning about climate change the Pacific way: a visual guide - Vanuatu
www.spc.int www.giz.de Climatic changes — Vanuatu.
Environment — Management — Vanuatu.
Climatic changes — Management — Vanuatu.

I. Title II. Deutsche Gesellschaft für Internationale Zusammenarbeit
III. Secretariat of the Pacific Community

577.22 AACR2
ISBN: 978-982-00-0678-2

Compiled by Secretariat of the Pacific Community (SPC) and Deutsche Gesellschaft für Internationale Zusammenarbeit (GIZ) Coping with Climate Change in the Pacific Island Region (CCCPIR) program

Designers: Saula Baleikaba, Jipé Le-Bars (SPC), Duane Leewai, Charles Pierce, Hanna Sabass (SPC/GIZ CCCPIR), Apenisa Tamani (SPC/GIZ CCCPIR) and Carol Young (University of Auckland)

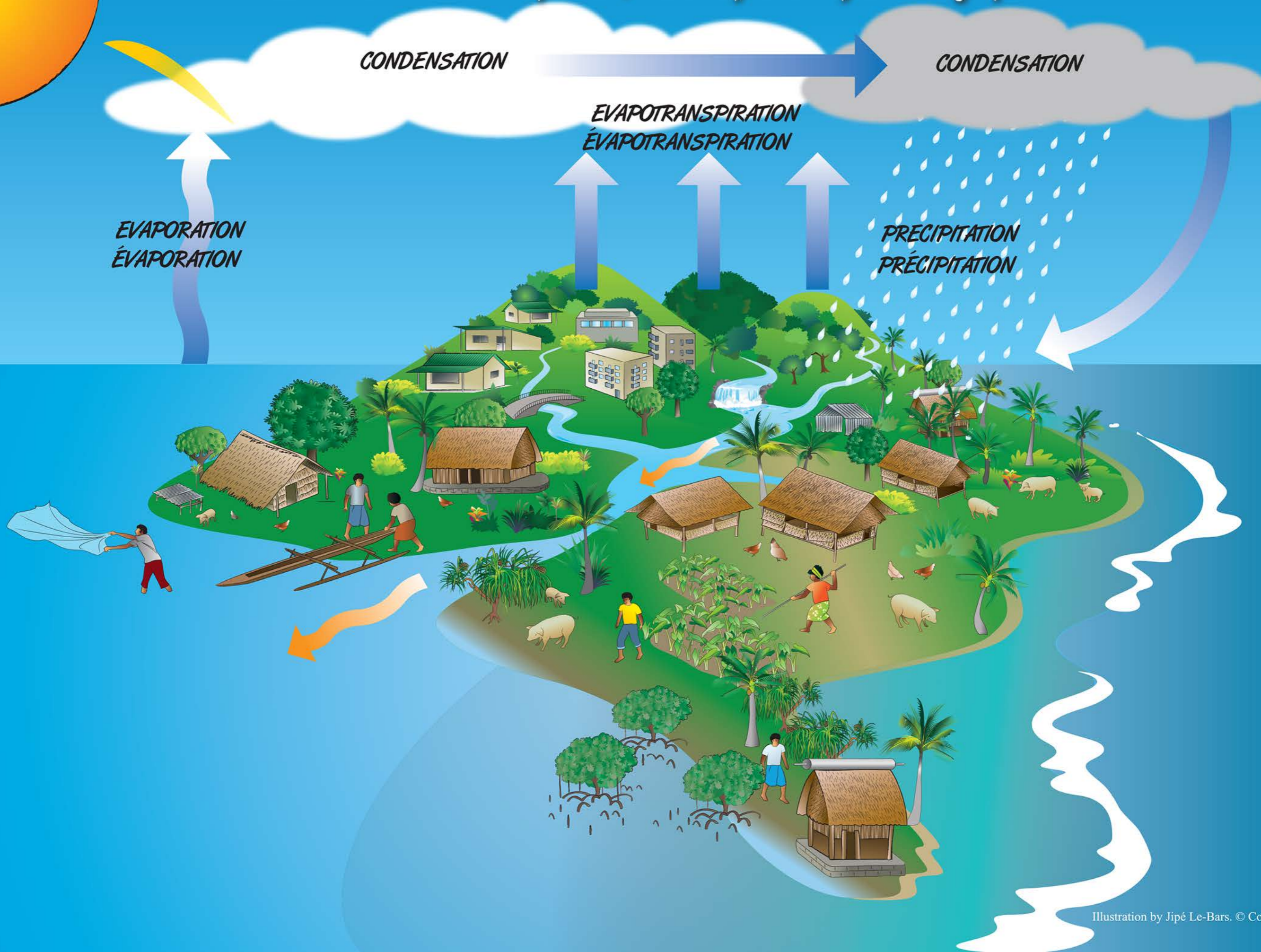
Art work by Jipé Le-Bars (SPC) & Duane Leewai

This publication was produced with funding from the Pacific-Australia Climate Change Science and Adaptation Planning (PACCSAP) program of the Australian Government; the SPC/GIZ Coping with Climate Change in the Pacific Island Region program (CCCPIR) on behalf of the German Federal Ministry for Economic Cooperation and Development (BMZ); and the SPC/USAID Vegetation and Land Cover Mapping and Improving Food Security for Building Resilience to a Changing Climate in Pacific Island Communities program.

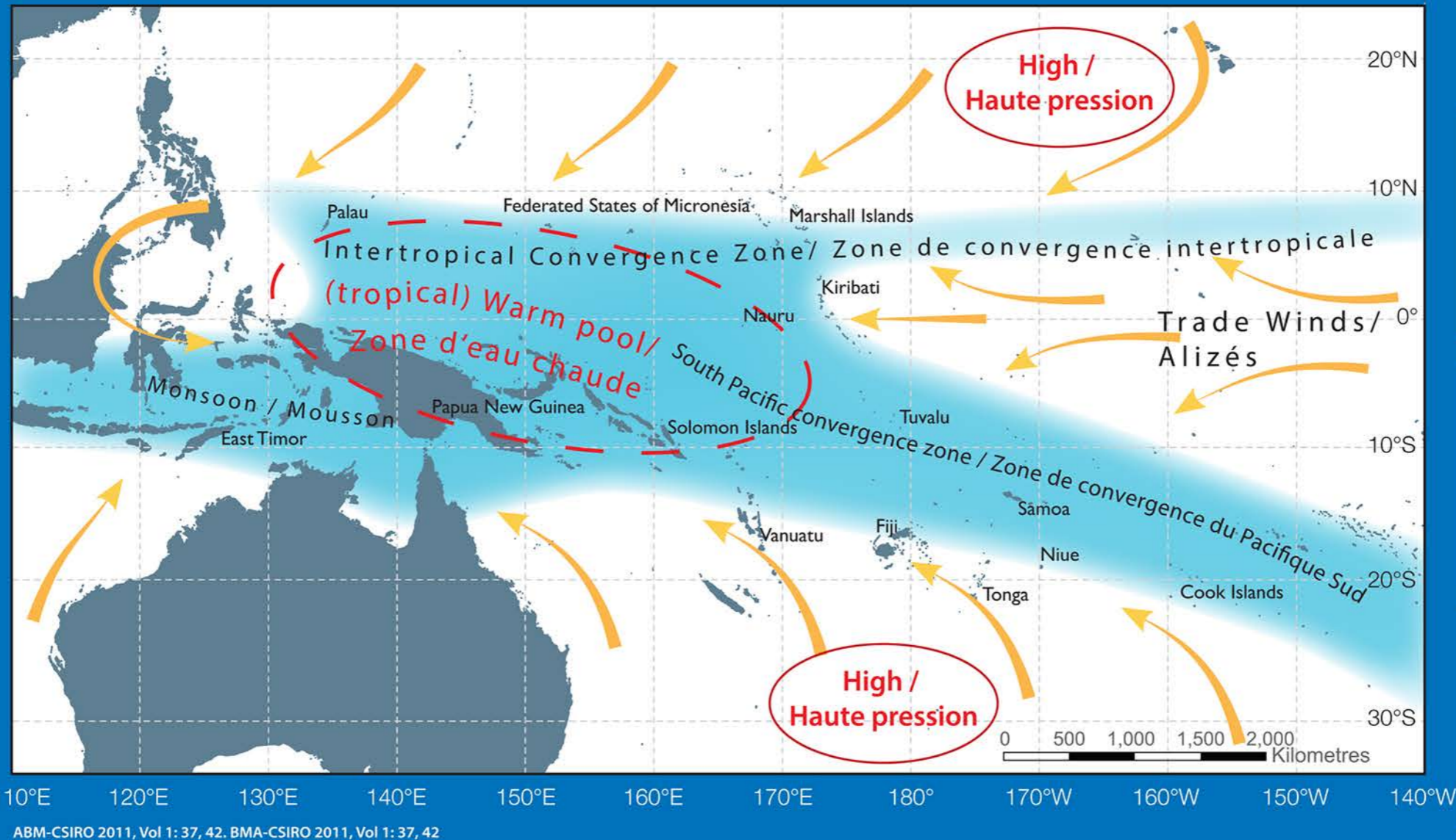
I. Pasifika



2. The Water Cycle / Le cycle hydrologique



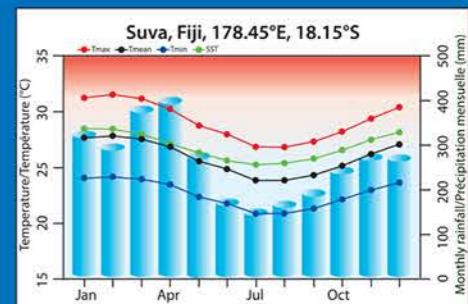
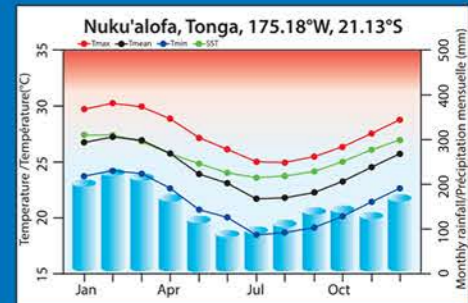
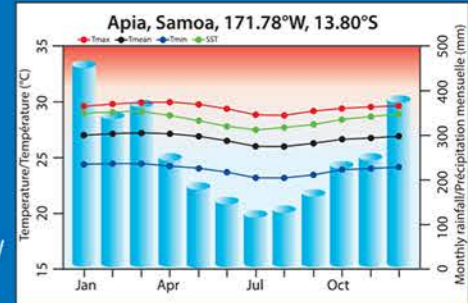
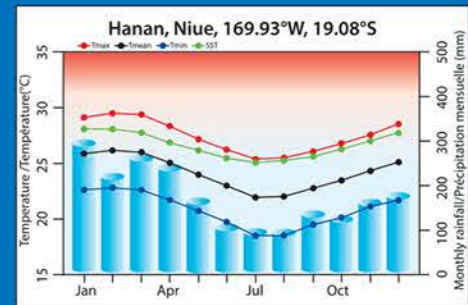
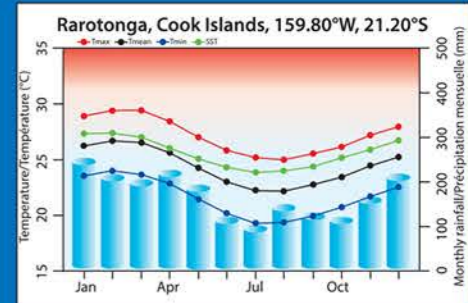
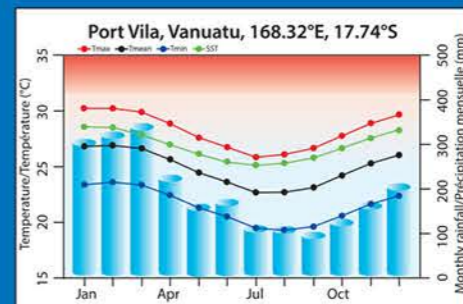
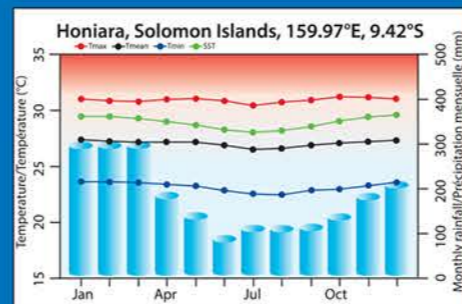
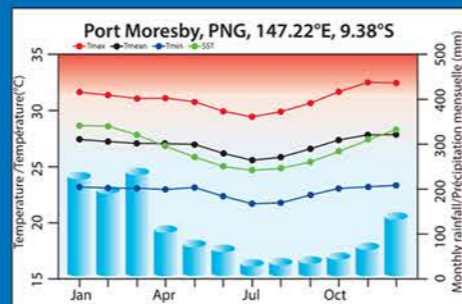
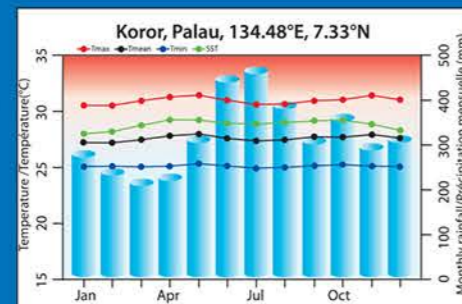
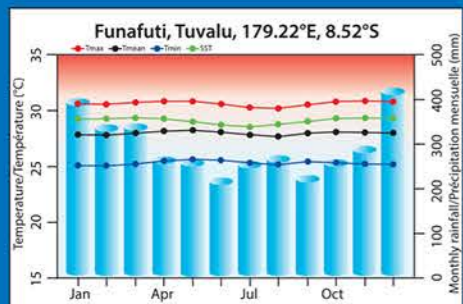
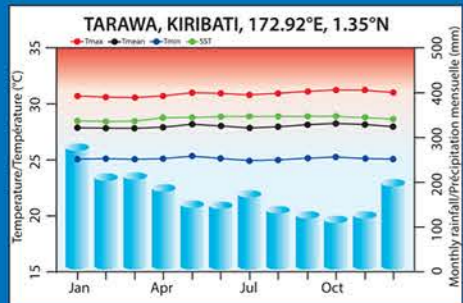
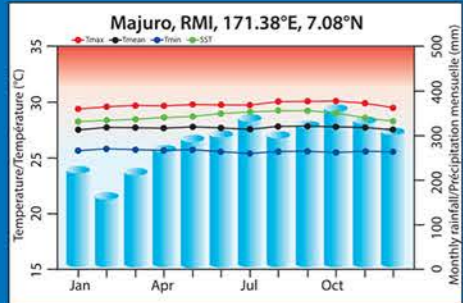
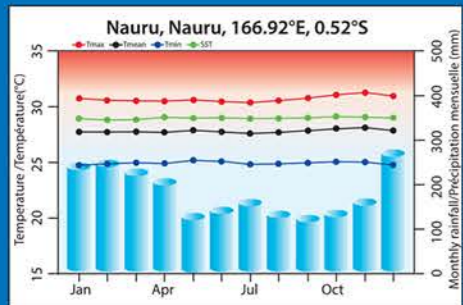
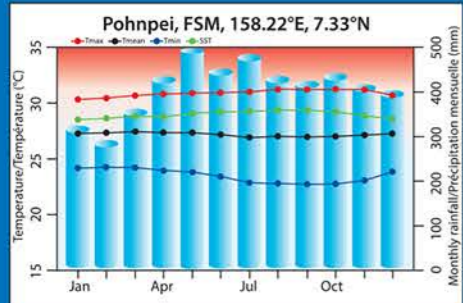
3. Climate in the Pacific - Le climat dans la région océanienne



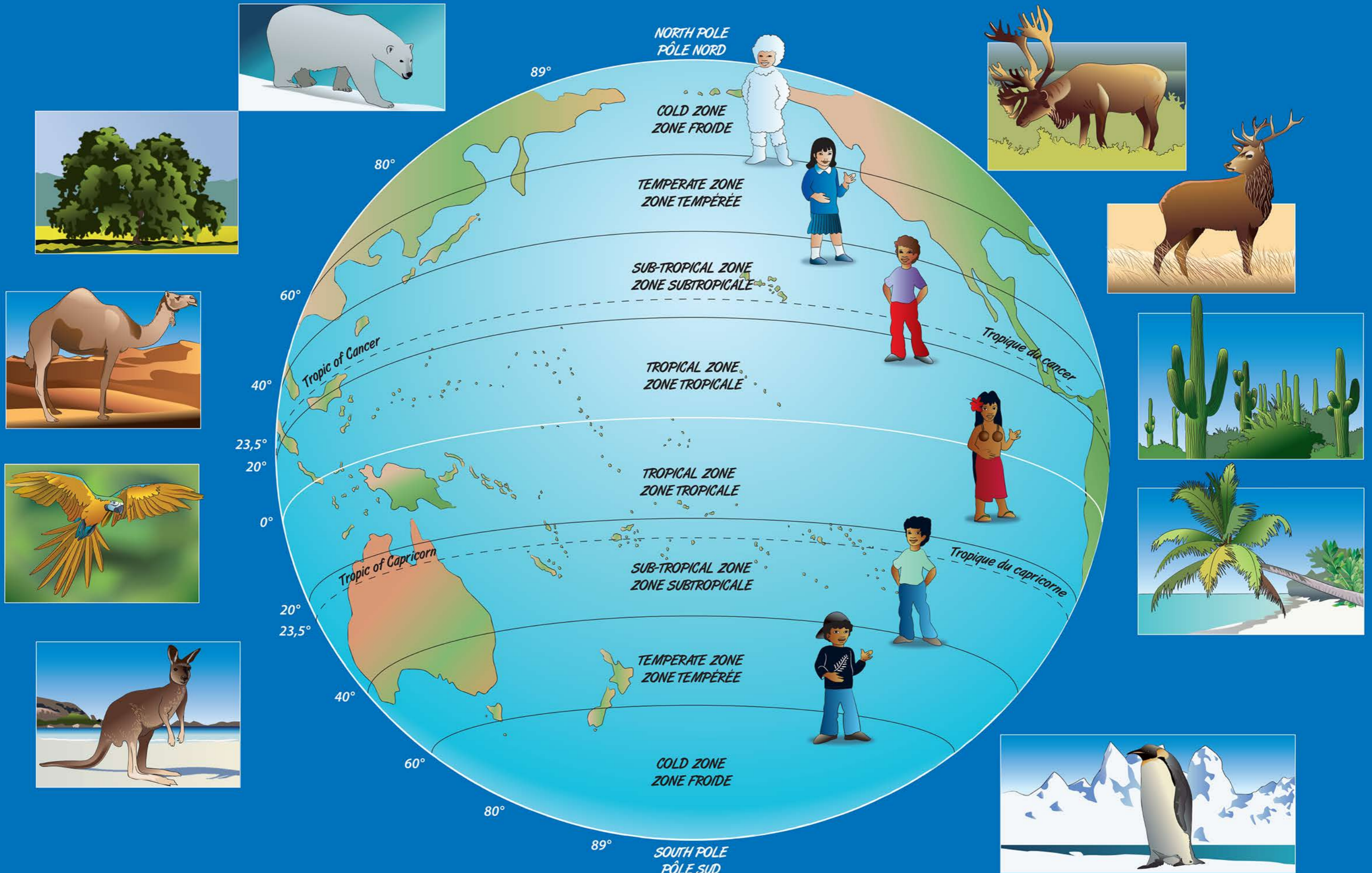
ABM-CSIRO 2011, Vol 1: 37, 42. BMA-CSIRO 2011, Vol 1: 37, 42

Monthly average maximum air temperature (red), mean air temperature (black), minimum air temperature (blue), sea-surface temperature (green) and average monthly rainfall (blue bars) at key locations in each of the Partner Countries. Station data over 1961–1990 were used.

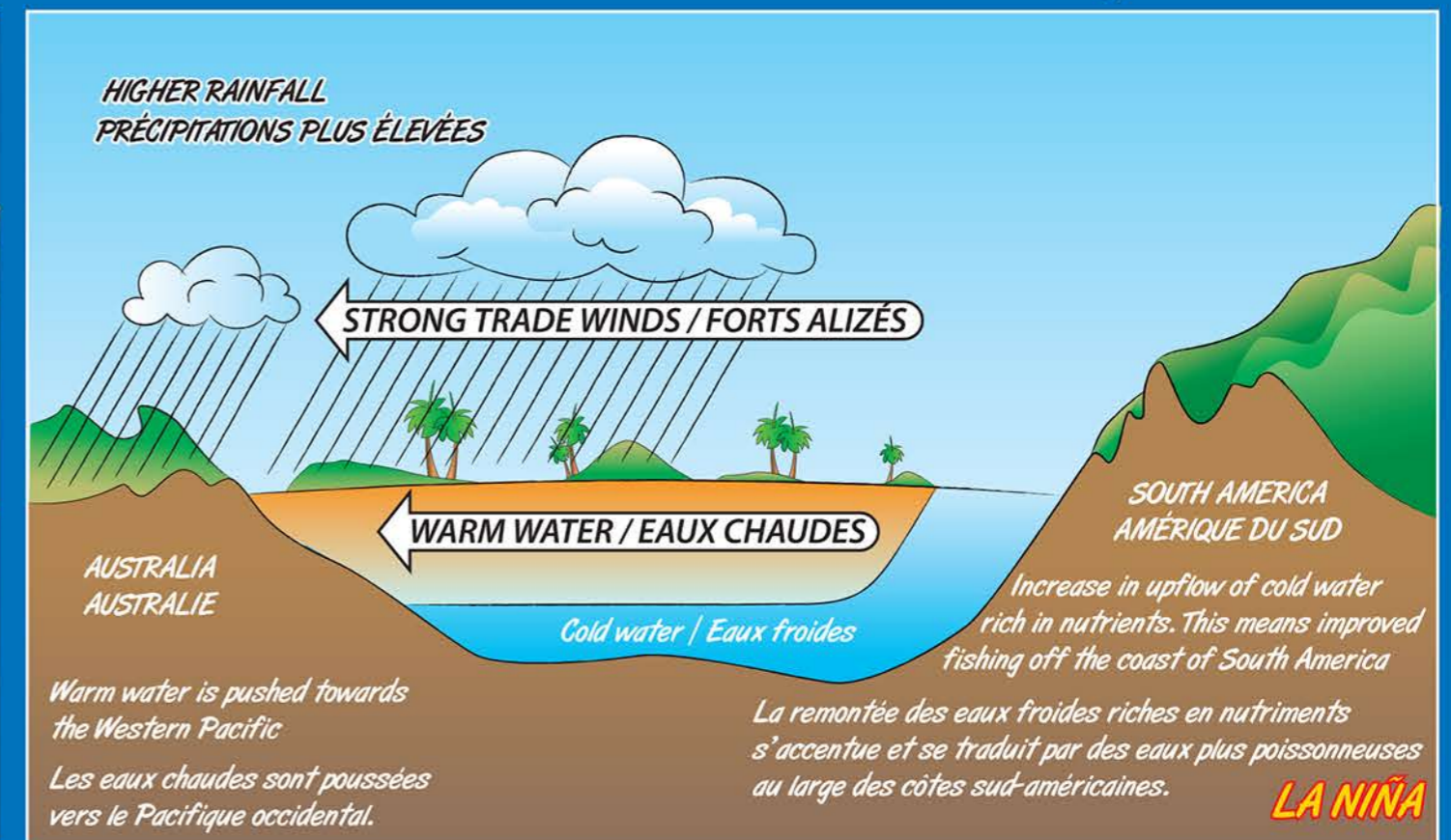
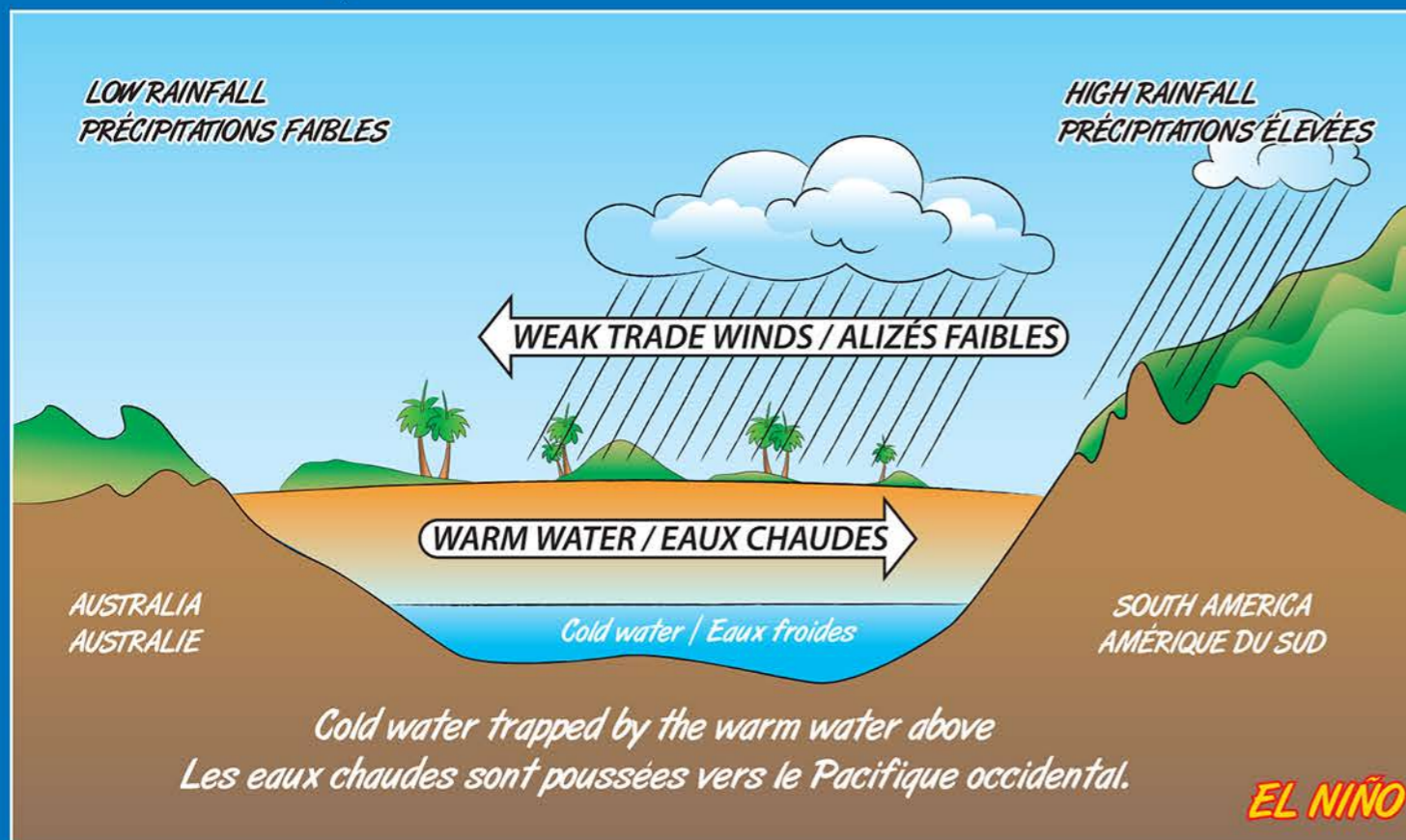
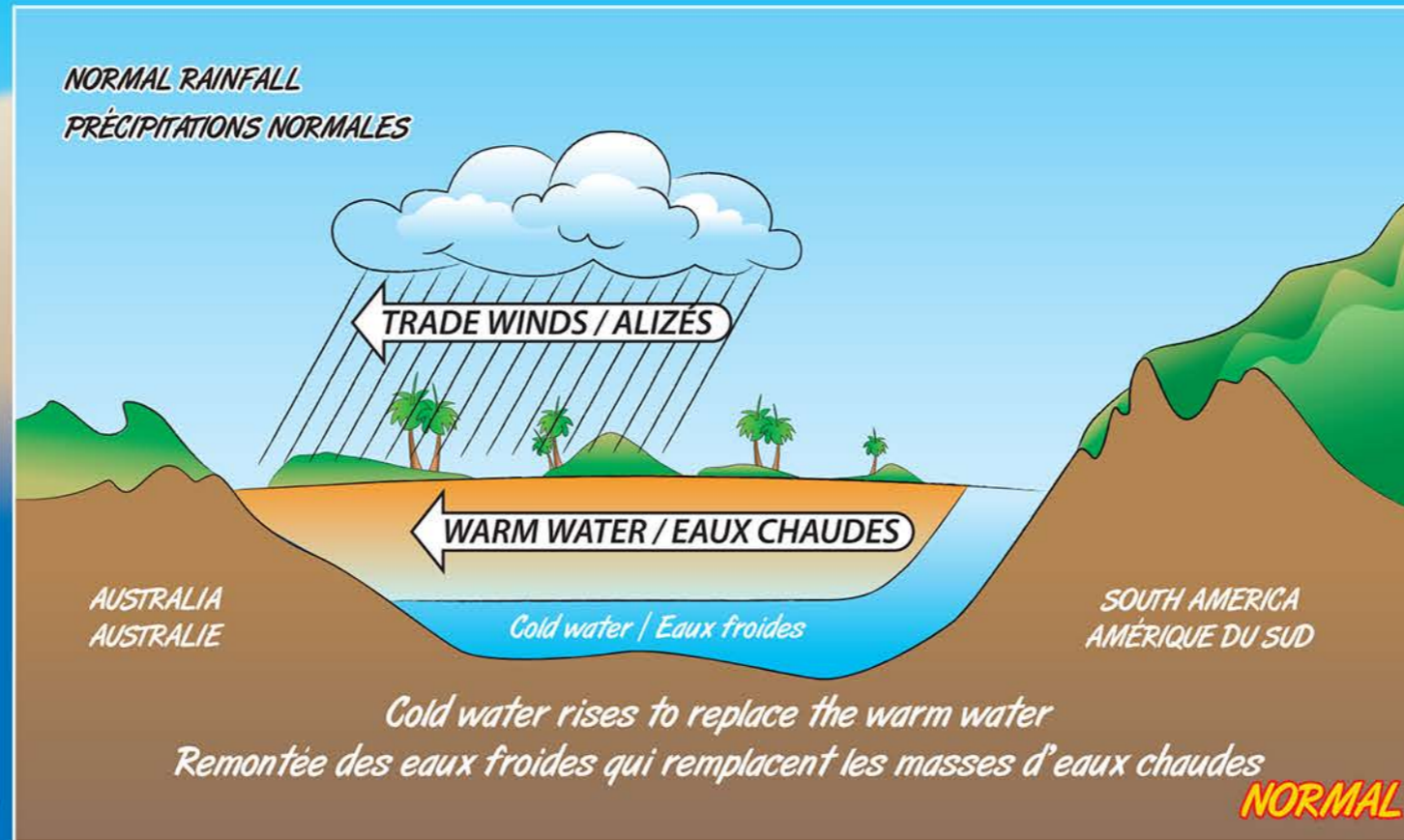
Température moyenne maximale mensuelle de l'air (en rouge), température moyenne de l'air (en noir), température minimale de l'air (en bleu), température de la mer en surface (en vert) et précipitations moyennes mensuelles (barres bleues) dans des zones clés situées dans chacun des pays partenaires. On a utilisé les données des stations de 1961 à 1990.



4. Global climate - Le climat mondial



5. El Niño Southern Oscillation (ENSO) and climate variability / Le phénomène d'oscillation australe El Niño (OAEN) et la variabilité climatique



6. Causes of Climate Change / Les causes du changement climatique



7. Interrelationships / Les liens d'interdépendance



8. The changing climate of Vanuatu - L'évolution du climat à Vanuatu



Flooded gardens © Christopher Bartlett, SPC/GIZ CCCPIR :
Jardins inondés © Christopher Bartlett (CPS/GIZ CCCPIR)



Flood in Malekula, © Christopher Bartlett, SPC/GIZ CCCPIR :
Inondation à Malekula © Christopher Bartlett (CPS/GIZ CCCPIR)



Coastal erosion, © Charles Pierce:
Érosion du littoral © Charles Pierce



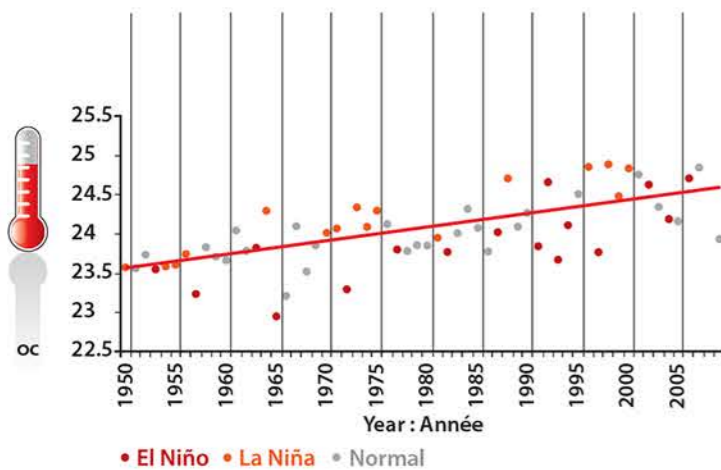
Flooding in Port Vila © SPC SOPAC :
Inondation à Port-Vila @ Division SOPAC de la CPS



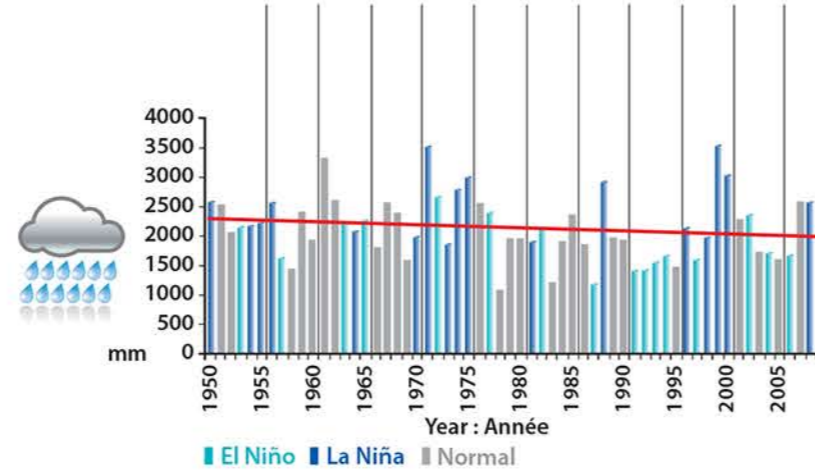
Cyclone damage, © SPC SOPAC :
Dégâts provoqués par un cyclone @ Division SOPAC de la CPS

Changing Climate - Évolution du climat:

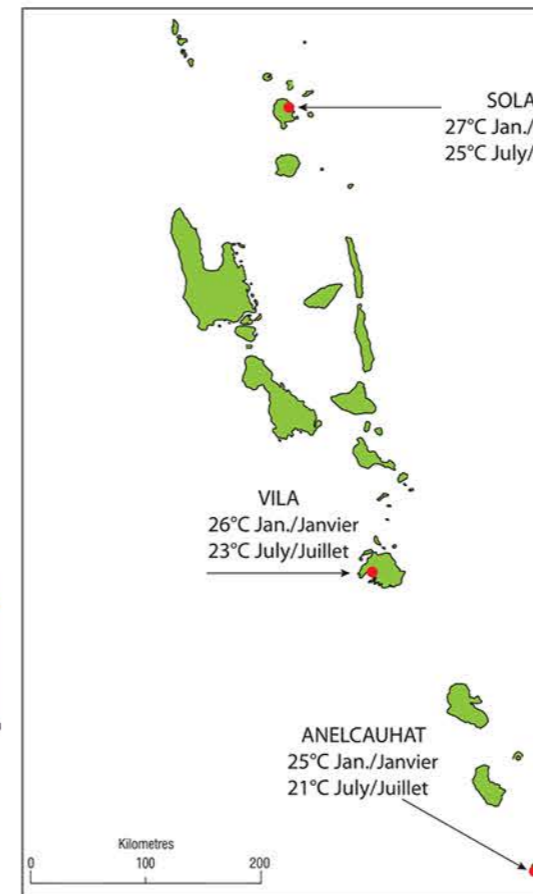
Average annual temperature for Port Vila
Températures moyennes annuelles à Port-Vila



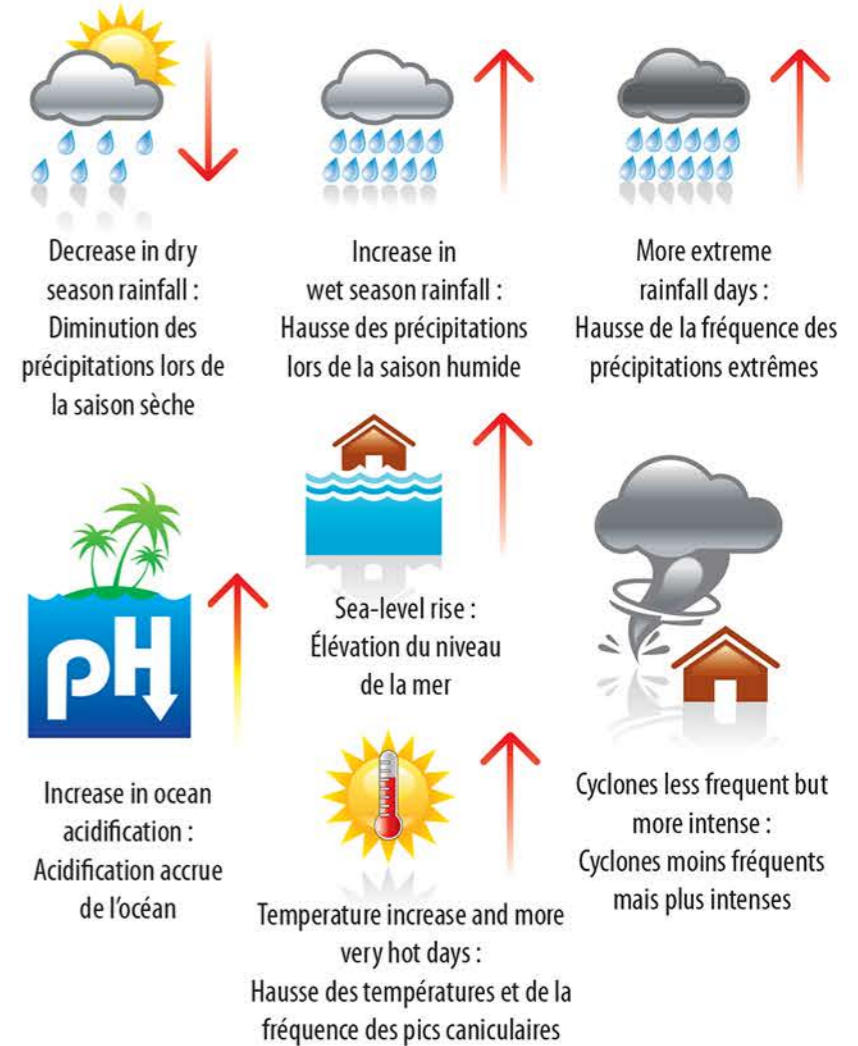
Average annual rainfall for Port Vila
Précipitations moyennes annuelles à Port-Vila



Source: ABM & CSIRO 2011



Future Climate - Climat futur:



9. Pasifika after a cyclone or severe storm /
Pasifika après le passage d'un cyclone ou une forte tempête



10. Pasifika during a drought - Pasifika après un épisode de sécheresse



II. Mitigation and adaptation activities - Mesures d'atténuation et d'adaptation

Mitigation - Atténuation

Mitigation + Adaptation - Atténuation + Adaptation

Adaptation - Adaptation



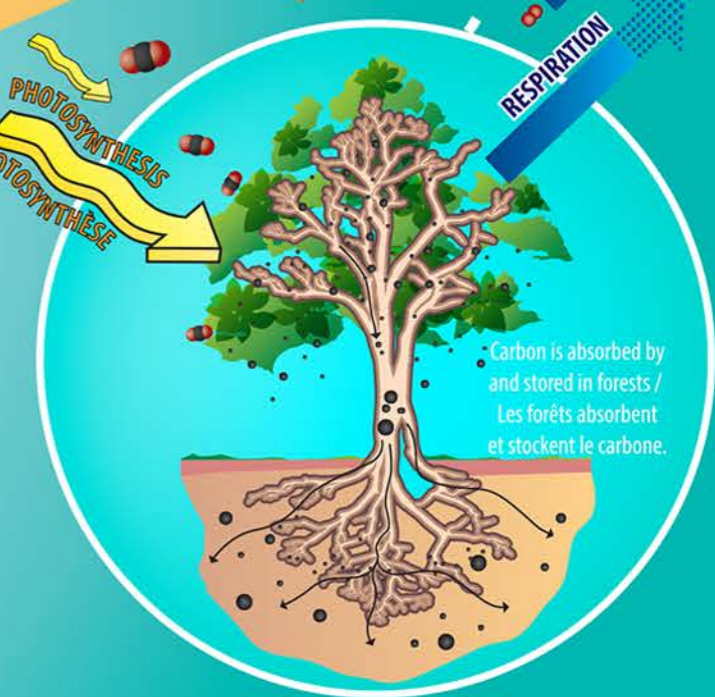
12. Gardening and livestock / Le jardinage et l'élevage



13. Forestry and agro-forestry / La foresterie et l'agroforesterie



-  CO₂ → Carbon dioxide / Dioxyde de carbone
-  O₂ → Oxygen / Oxygène
-  C → Carbon / Carbone



14. Fishing - La pêche





16. Pasifika with adaptations in place / Pasifika après la mise en œuvre des mesures d'adaptation



MPA (Marine Protected Area)
AMP (Aire Marine Protégée)