

Learning about climate change the Pacific way *A visual guide*



Source: SPC/GIZ



Tonga



© Copyright Secretariat of the Pacific Community (SPC) and Deutsche Gesellschaft für Internationale Zusammenarbeit (GIZ) GmbH, 2014

All rights reserved. Requests to reproduce this material for educational, scientific or research purposes should be sent to spc@gspc.int

Secretariat of the Pacific Community
BP DS, 98948 Noumea Cedex, New Caledonia
Tel. +687 26 20 00, www.spc.int

SPC/GIZ Coping with Climate Change in the Pacific Island Region
Deutsche Gesellschaft für Internationale Zusammenarbeit (GIZ) GmbH
P.O. Box 14041, Suva, Fiji
Tel. +679 3305 983

Printed by Ultimo Group, Auckland, New Zealand, 2014

Secretariat of the Pacific Community Cataloguing-in-publication data
Learning about climate change the Pacific way: a visual guide - Tonga
Climatic changes — Tonga.
Environment — Management — Tonga.
Climatic changes — Management — Tonga.

I. Title II. Deutsche Gesellschaft für Internationale Zusammenarbeit
III. Secretariat of the Pacific Community

577.22 AACR2
ISBN: 978-982-00-0690-4

Compiled by Secretariat of the Pacific Community (SPC) and Deutsche Gesellschaft für Internationale Zusammenarbeit (GIZ) Coping with Climate Change in the Pacific Island Region (CCCPIR) program

Designers: Saula Baleikaba, Jipé Le-Bars (SPC), Duane Leewai, Charles Pierce, Hanna Sabass (SPC/GIZ CCCPIR), Apenisa Tamani (SPC/GIZ CCCPIR) and Carol Young (University of Auckland)

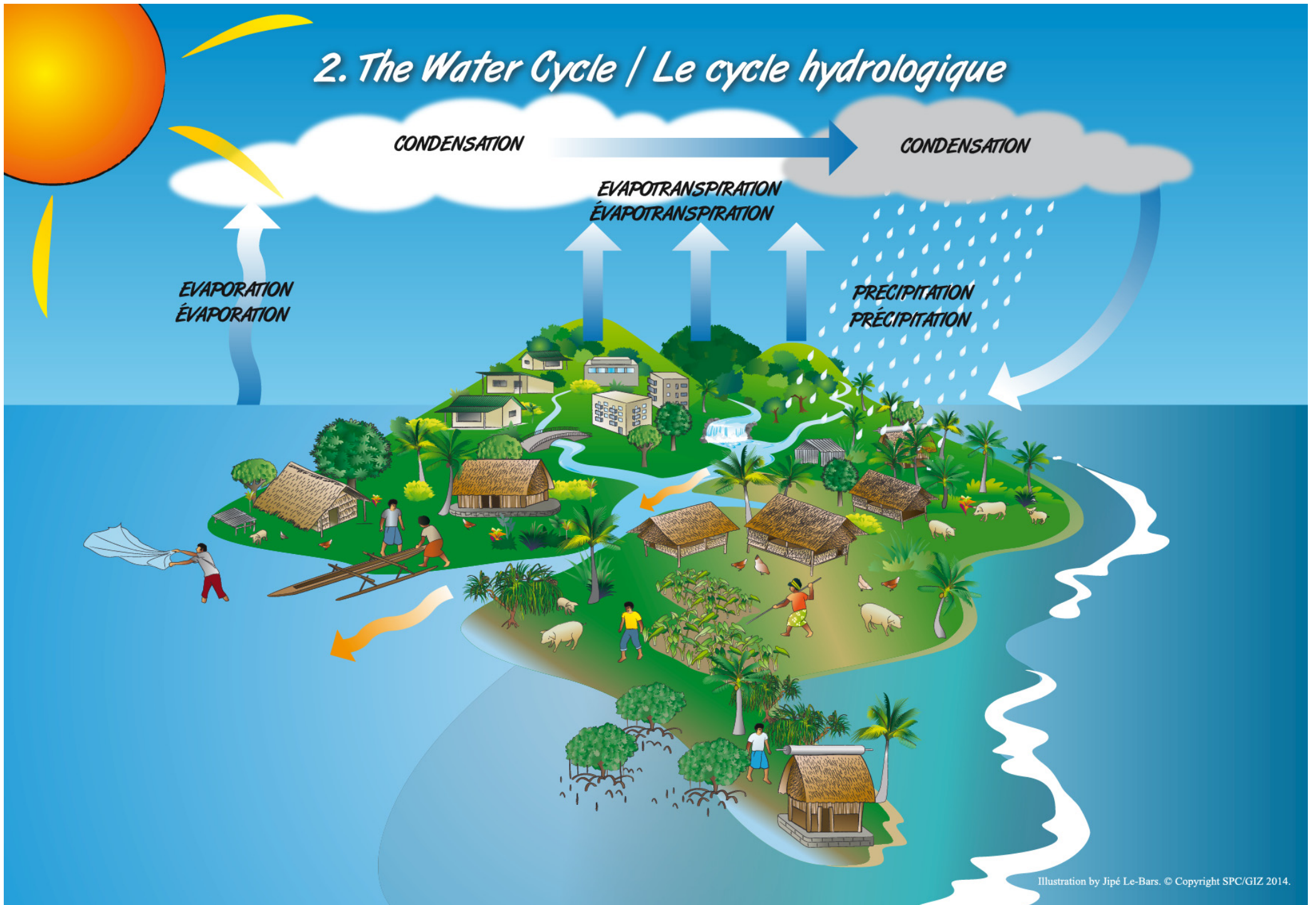
Art work by Jipé Le-Bars (SPC) & Duane Leewai

This publication was produced with funding from the Pacific-Australia Climate Change Science and Adaptation Planning (PACCSAP) program of the Australian Government; the SPC/GIZ Coping with Climate Change in the Pacific Island Region program (CCCPIR) on behalf of the German Federal Ministry for Economic Cooperation and Development (BMZ); and the SPC/USAID Vegetation and Land Cover Mapping and Improving Food Security for Building Resilience to a Changing Climate in Pacific Island Communities program.

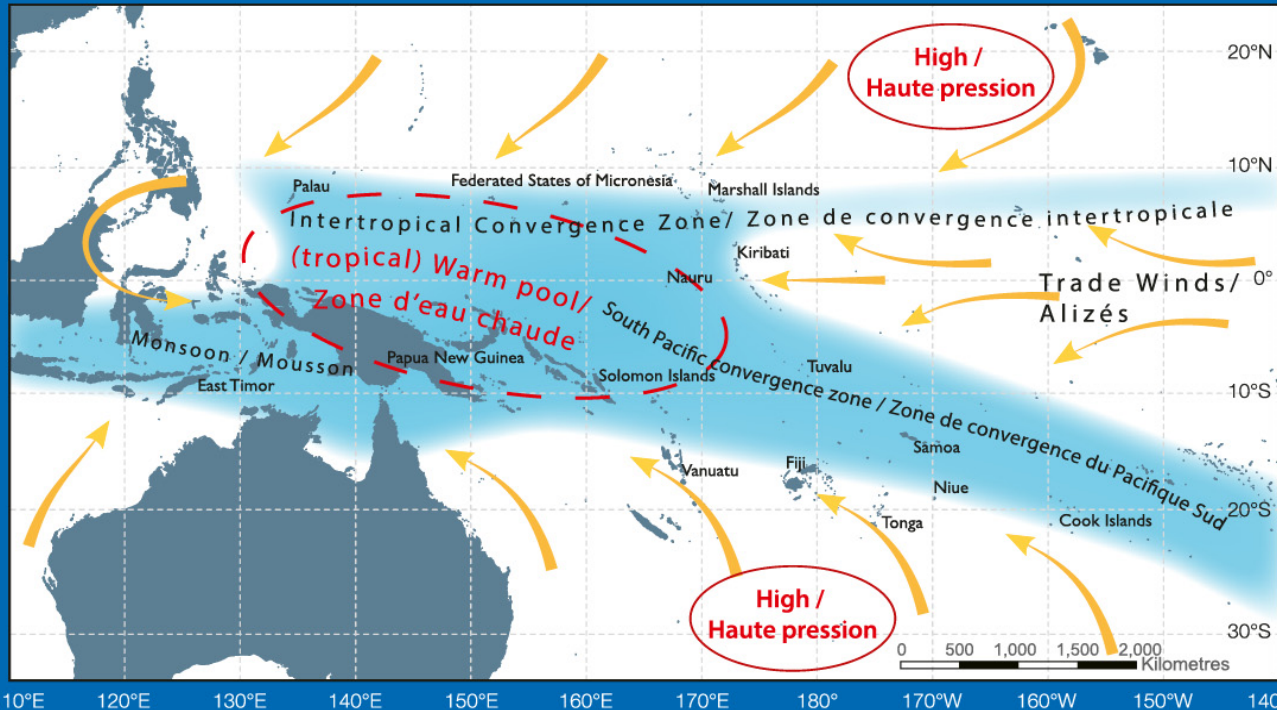
I. Pasifika



2. The Water Cycle / Le cycle hydrologique



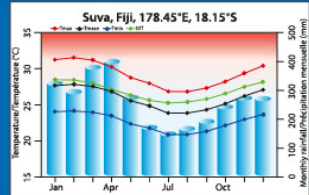
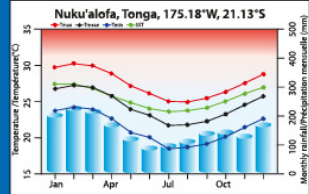
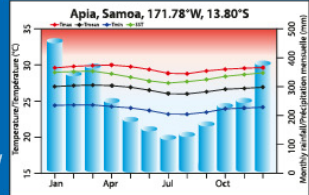
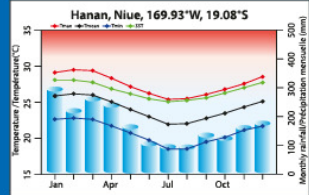
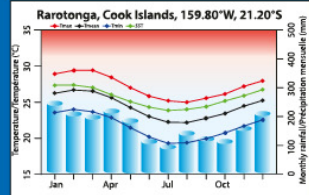
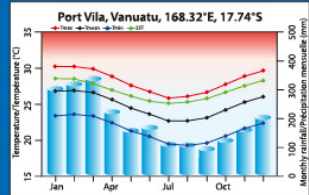
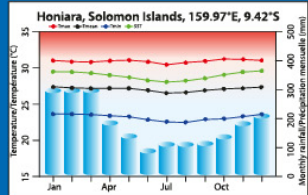
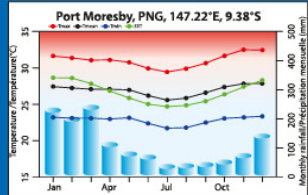
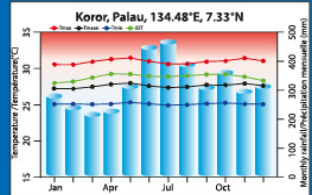
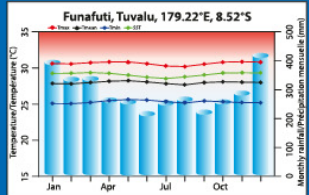
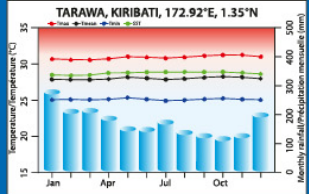
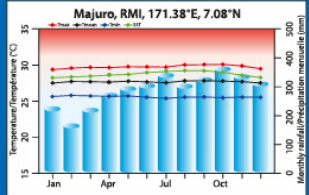
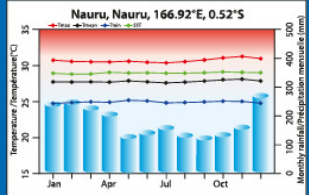
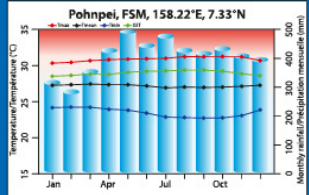
3. Climate in the Pacific - Le climat dans la région océanienne



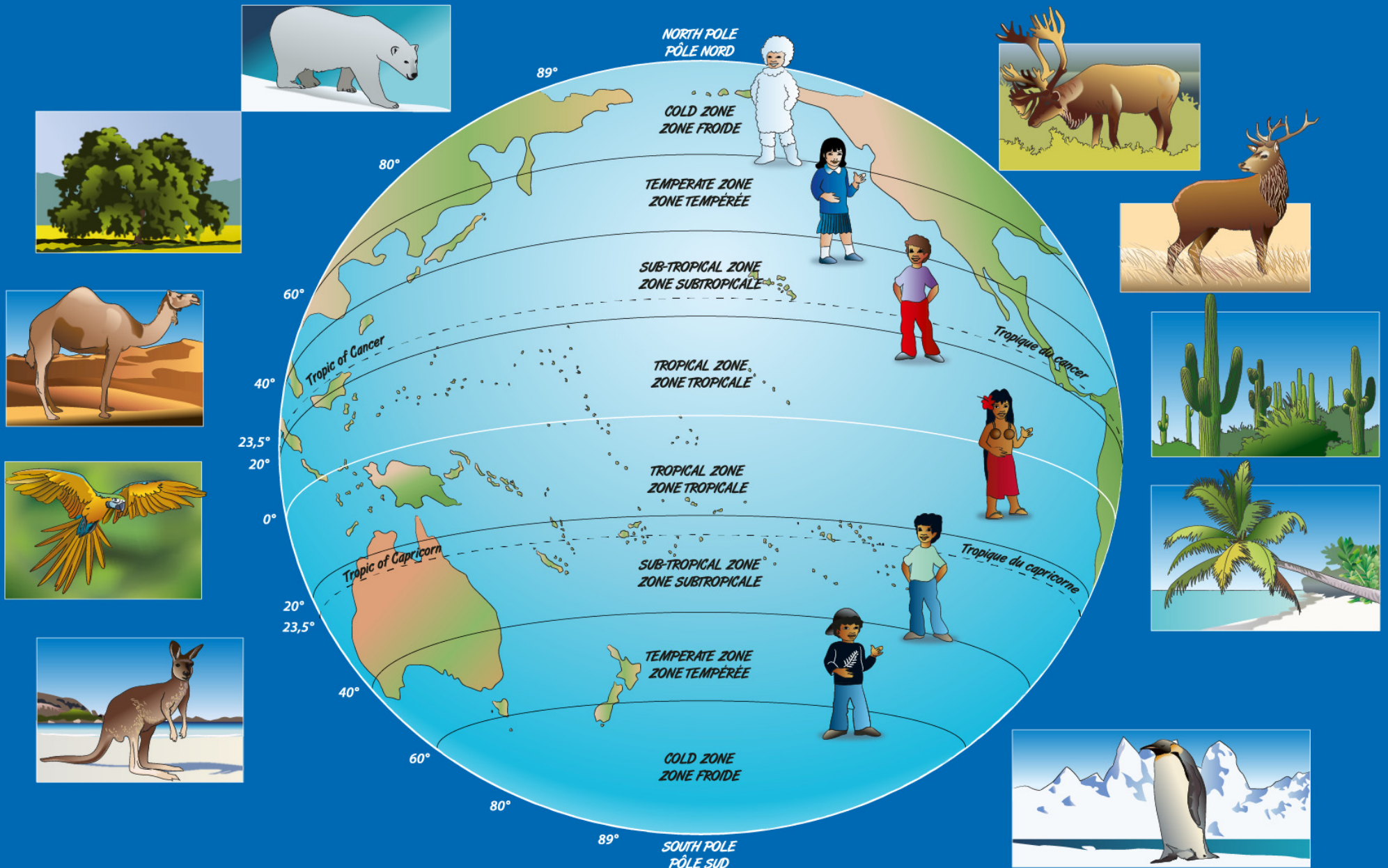
ABM-CSIRO 2011, Vol 1: 37, 42. BMA-CSIRO 2011, Vol 1: 37, 42

Monthly average maximum air temperature (red), mean air temperature (black), minimum air temperature (blue), sea-surface temperature (green) and average monthly rainfall (blue bars) at key locations in each of the Partner Countries. Station data over 1961–1990 were used.

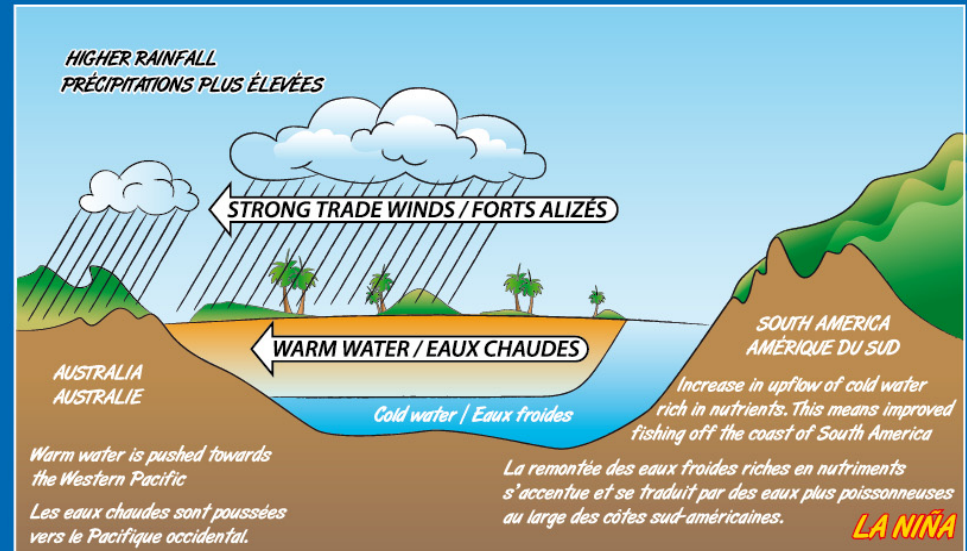
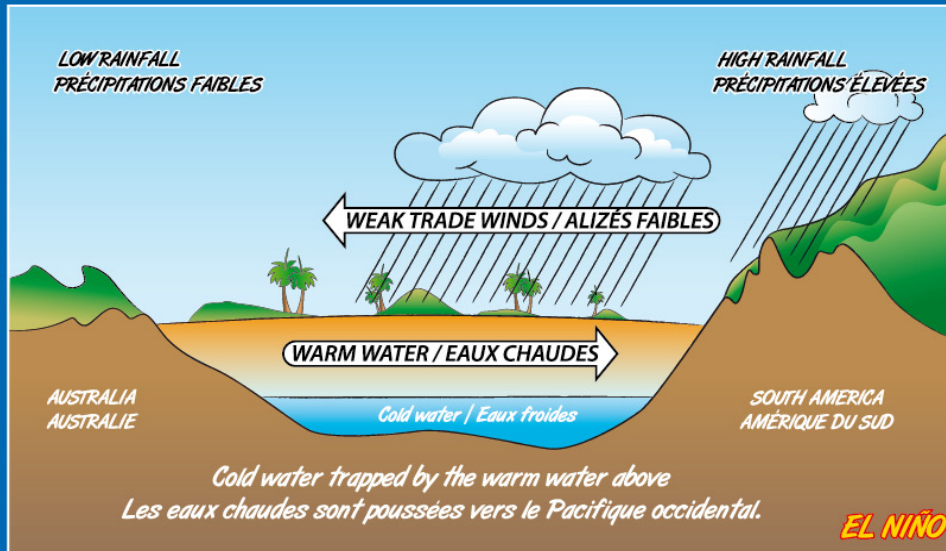
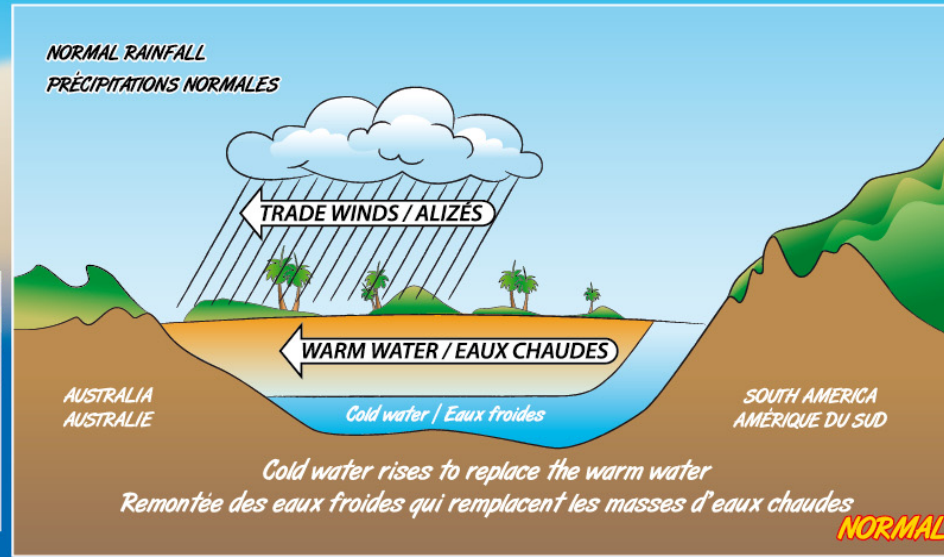
Température moyenne maximale mensuelle de l'air (en rouge), température moyenne de l'air (en noir), température minimale de l'air (en bleu), température de la mer en surface (en vert) et précipitations moyennes mensuelles (barres bleues) dans des zones clés situées dans chacun des pays partenaires. On a utilisé les données des stations de 1961 à 1990.



4. Global climate - Le climat mondial



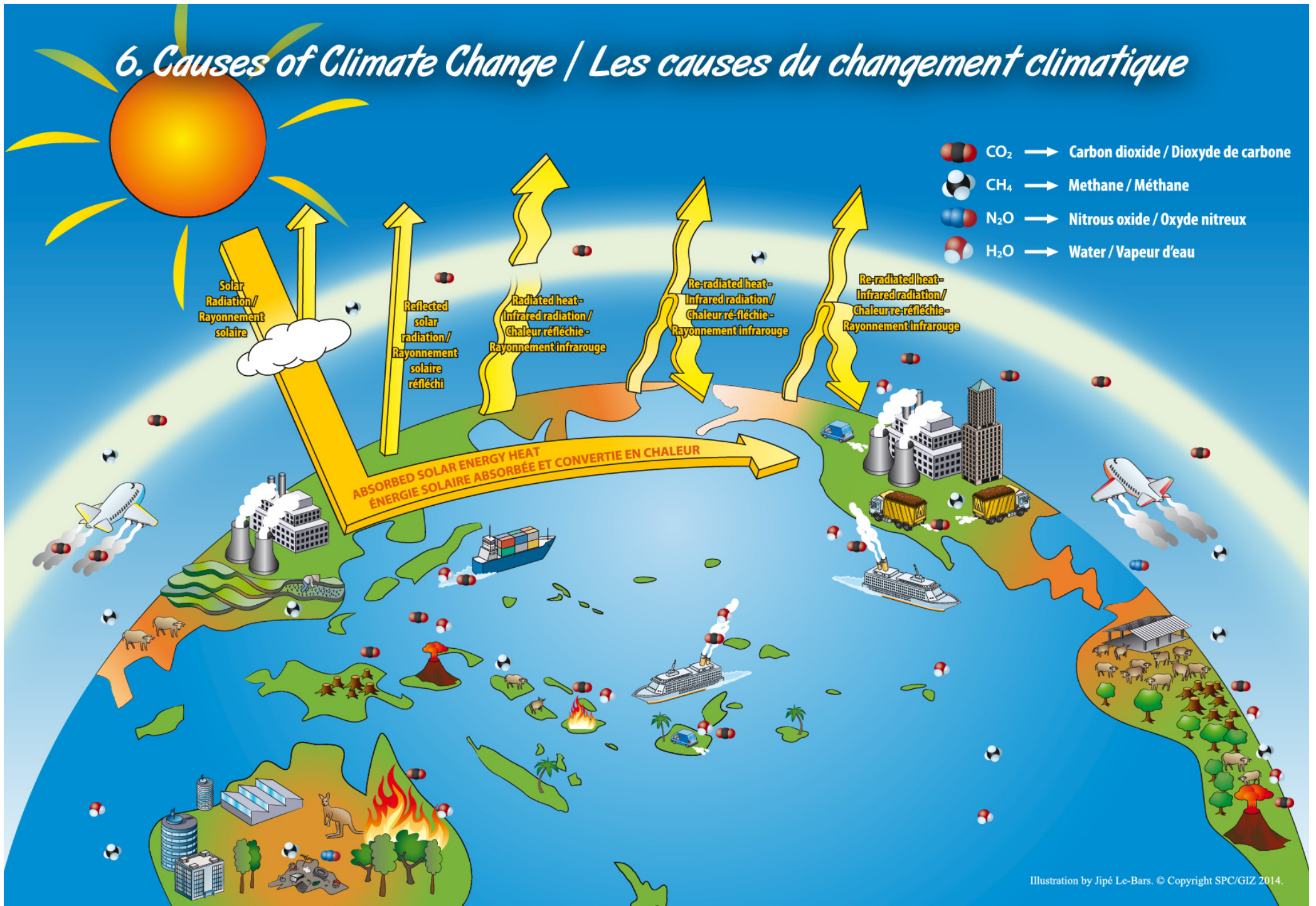
5. El Niño Southern Oscillation (ENSO) and climate variability / Le phénomène d'oscillation australe El Niño (OAEN) et la variabilité climatique



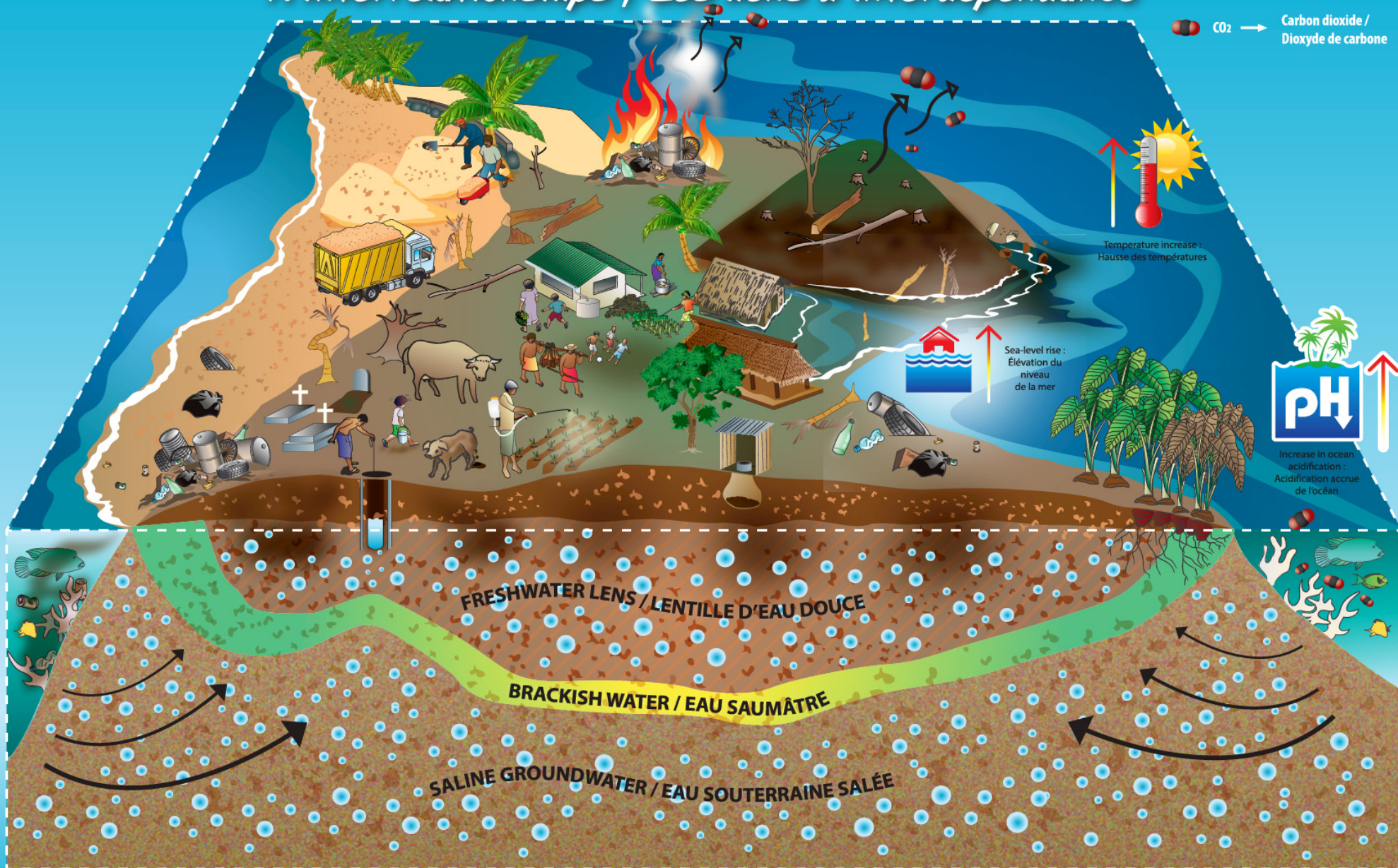
Crab, parrot and small El Niño & La Niña illustrations provided with courtesy of ABM-CSIRO-RCCC 2013. Le crabe, le perroquet et les petites illustrations d'El Niño et La Niña sont reproduites avec l'aimable autorisation d'ABM- CSIRO-RCCC 2013

Illustration by Jipé Le-Bars. © Copyright SPC/GIZ 2014.

6. Causes of Climate Change / Les causes du changement climatique



7. Interrelationships / Les liens d'interdépendance



8. The changing climate of Tonga



Flooding at Tupou high school, Vaololoa, 2013



The hospital fence in the sea, Lifuka, Ha'apai, NEMO, MOW, 2009



Coastal erosion, Lifuka Ha'apai, NEMO, MOW, 2009.



Coral bleaching, 2000



Flooding at high school, February-March, 2013



Flooding at Vaololoa rugby field, February-March, 2013



Stunted sweet potatoes during a drought, MAFF 2007.



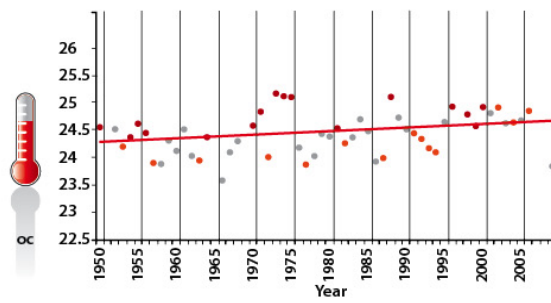
A house destroyed by Tropical Cyclone Rene, 2010, SNC Project Tonga, 2010



Destruction of coastal road and tree during Tropical Cyclone Rene, 2010, SNC Project Tonga, 2010

Changing Climate:

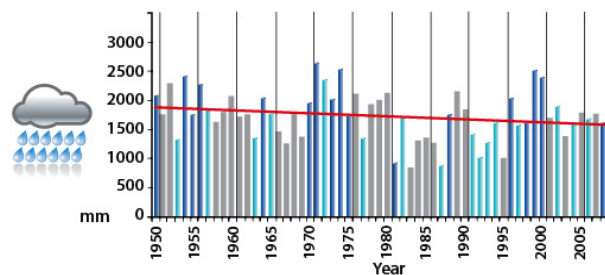
Average annual temperature for Nuku'alofa



• El Niño • La Niña • Normal

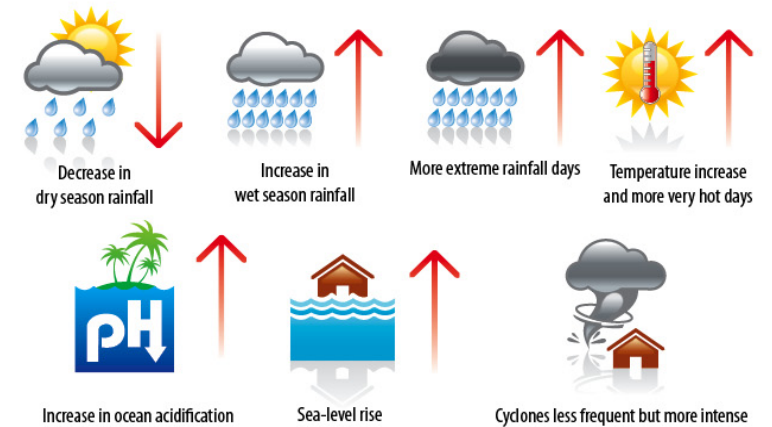
Source: ABM & CSIRO 2011

Average annual rainfall for Nuku'alofa



■ El Niño ■ La Niña ■ Normal

Future Climate:



*9. Pasifika after a cyclone or severe storm /
Pasifika après le passage d'un cyclone ou une forte tempête*



10. Pasifika during a drought - Pasifika après un épisode de sécheresse



12. Gardening and livestock / Le jardinage et l'élevage

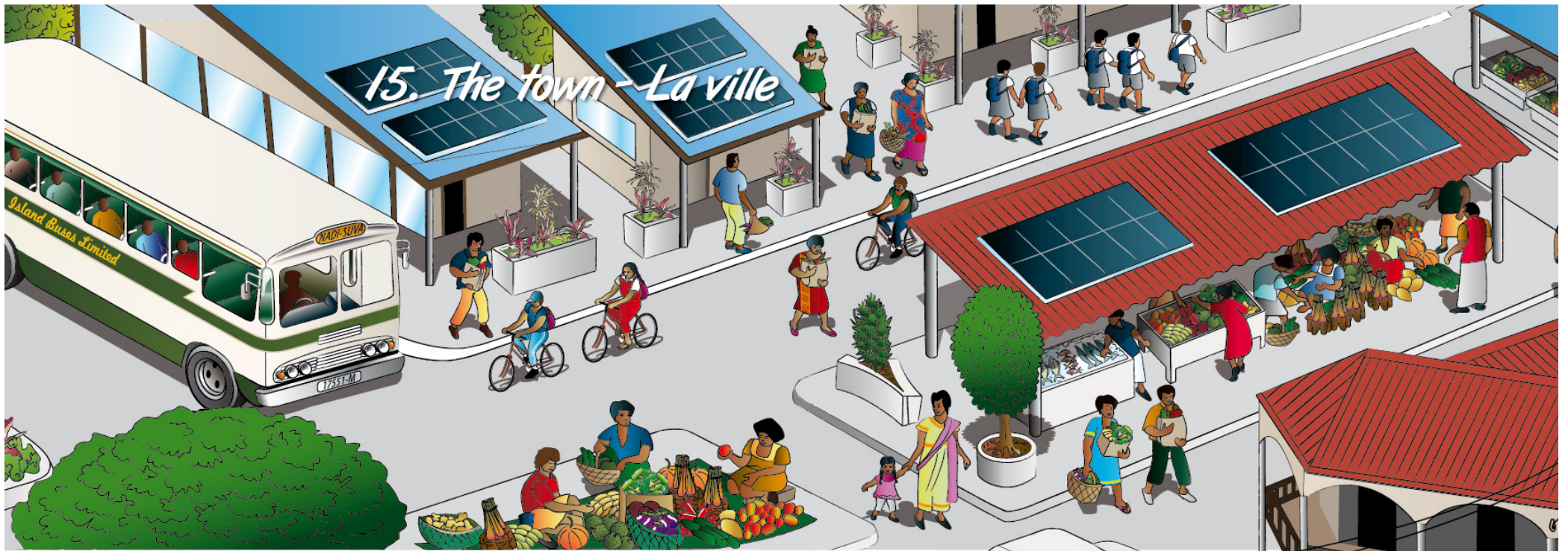


13. Forestry and agro-forestry / La foresterie et l'agroforesterie



14. Fishing - La pêche





16. Pasifika with adaptations in place / Pasifika après la mise en œuvre des mesures d'adaptation

